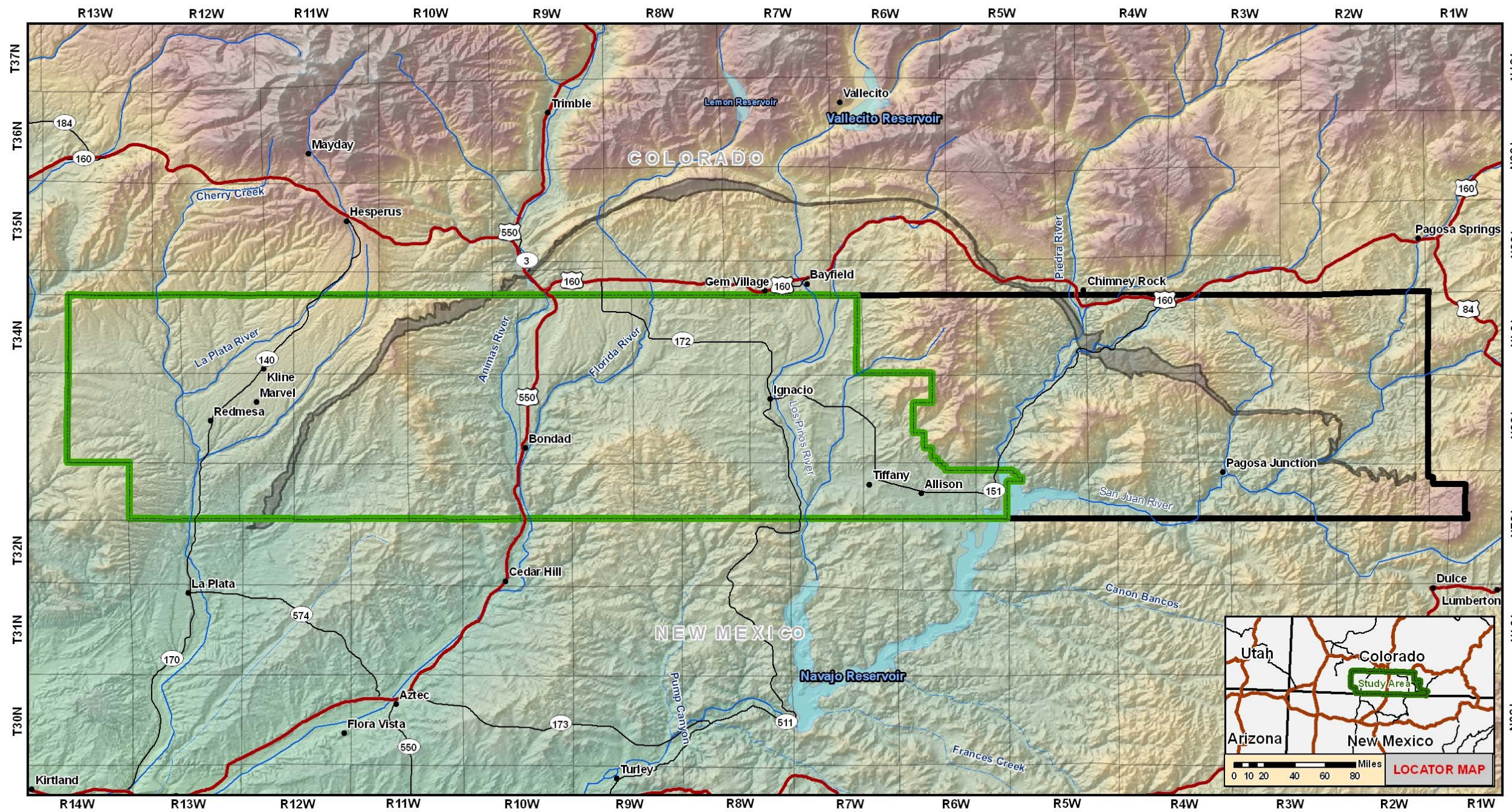


APPENDIX A
MAPS



STUDY AREA MAP

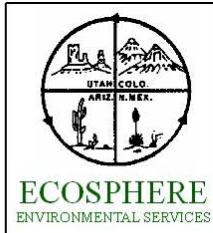
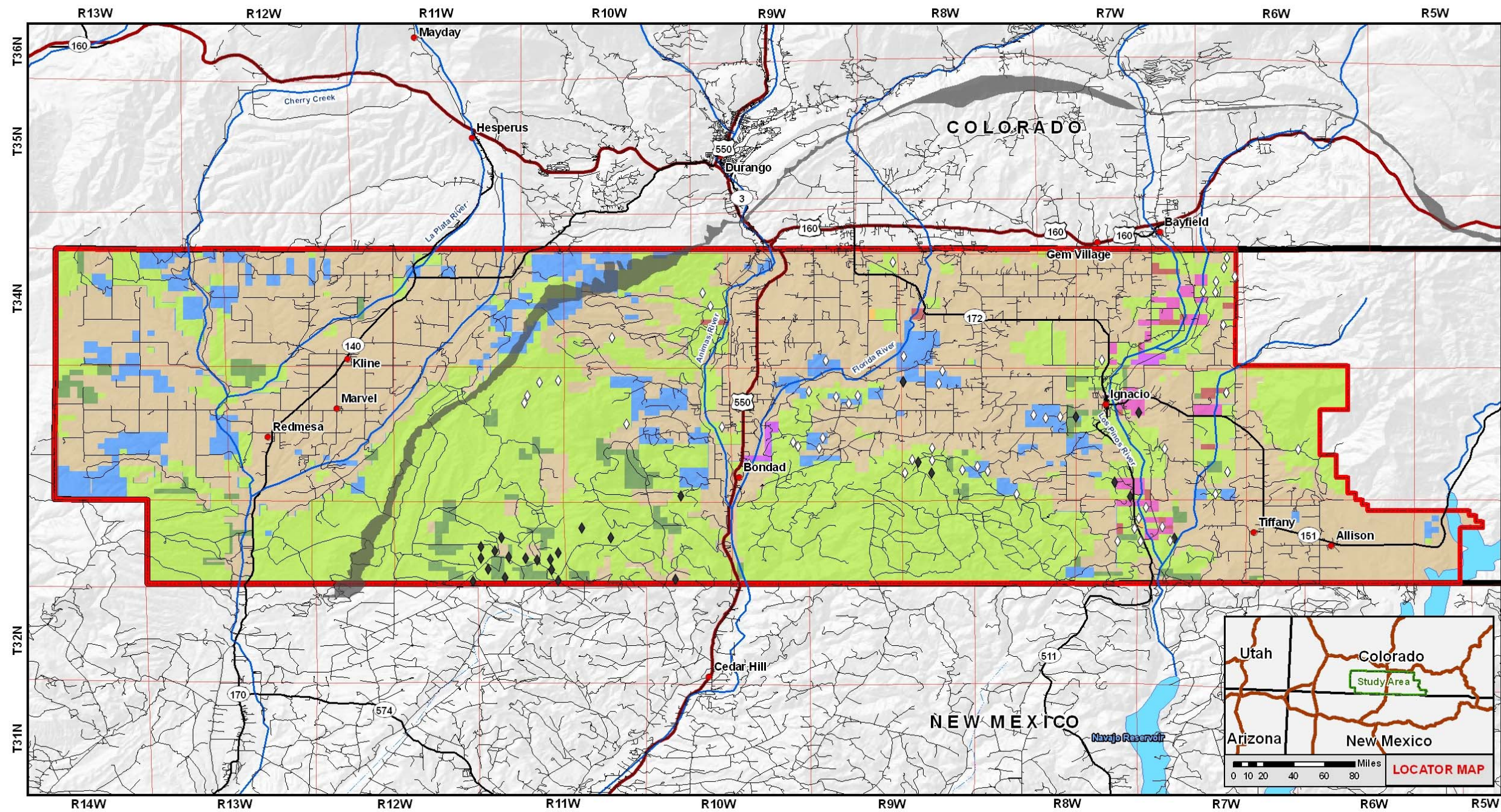
PROGRAMMATIC ENVIRONMENTAL ASSESSMENT
 SOUTHERN UTE INDIAN TRIBE PROJECTION: GCS WGS 1984
 MONTEZUMA, LA PLATA, AND ARCHULETA COUNTIES, COLORADO 12/1/2008

0 3 6 12 Miles
 Tribal Boundary Acreage:
 680,308 acres, 1063.5 square miles
 Study Area Acreage:
 421,450 acres, 658.5 square miles
 MAP LAYER SOURCES:
 SEE APPENDIX H

- Cities
- Highway
- Major Road
- Stream
- Stream Intermittent
- ▭ Study Area Boundary
- ▭ Tribal Boundary
- ▭ Lakes
- ▭ Fruitland Outcrop

MAP 1-1

 1:381,572



CURRENT DEVELOPMENT

PROGRAMMATIC ENVIRONMENTAL ASSESSMENT

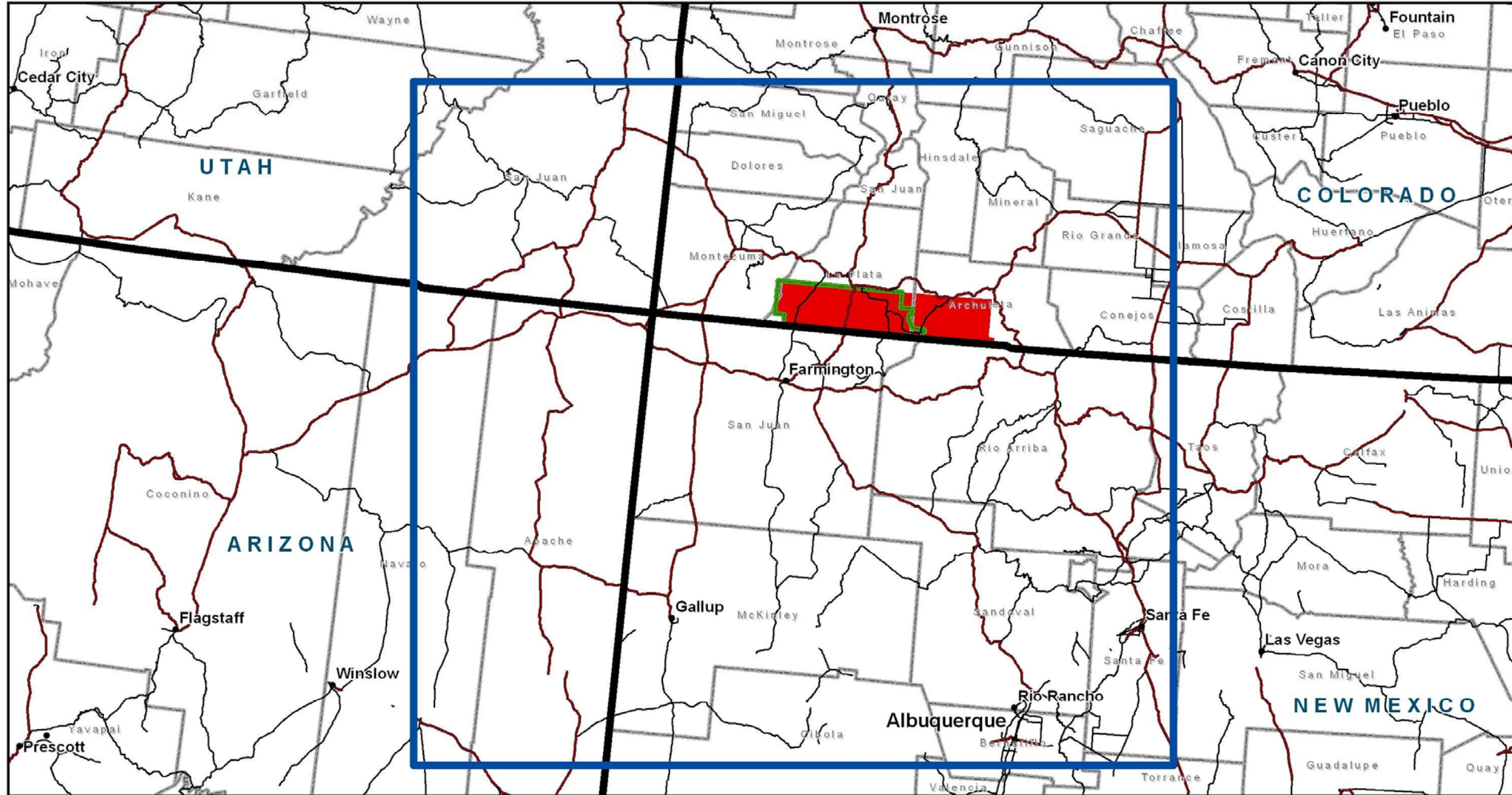
SOUTHERN UTE INDIAN TRIBE PROJECTION: GCS WGS 1984
 MONTEZUMA, LA PLATA, AND ARCHULETA COUNTIES, COLORADO 12/1/2008


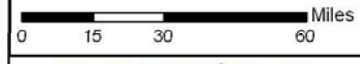


0 2 4 8 Miles
Tribal Boundary Acreage:
 680,308 acres, 1063.5 square miles
Study Area Acreage:
 421,450 acres, 658.5 square miles
MAP LAYER SOURCES:
 SEE APPENDIX H

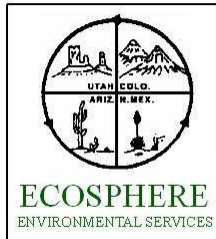
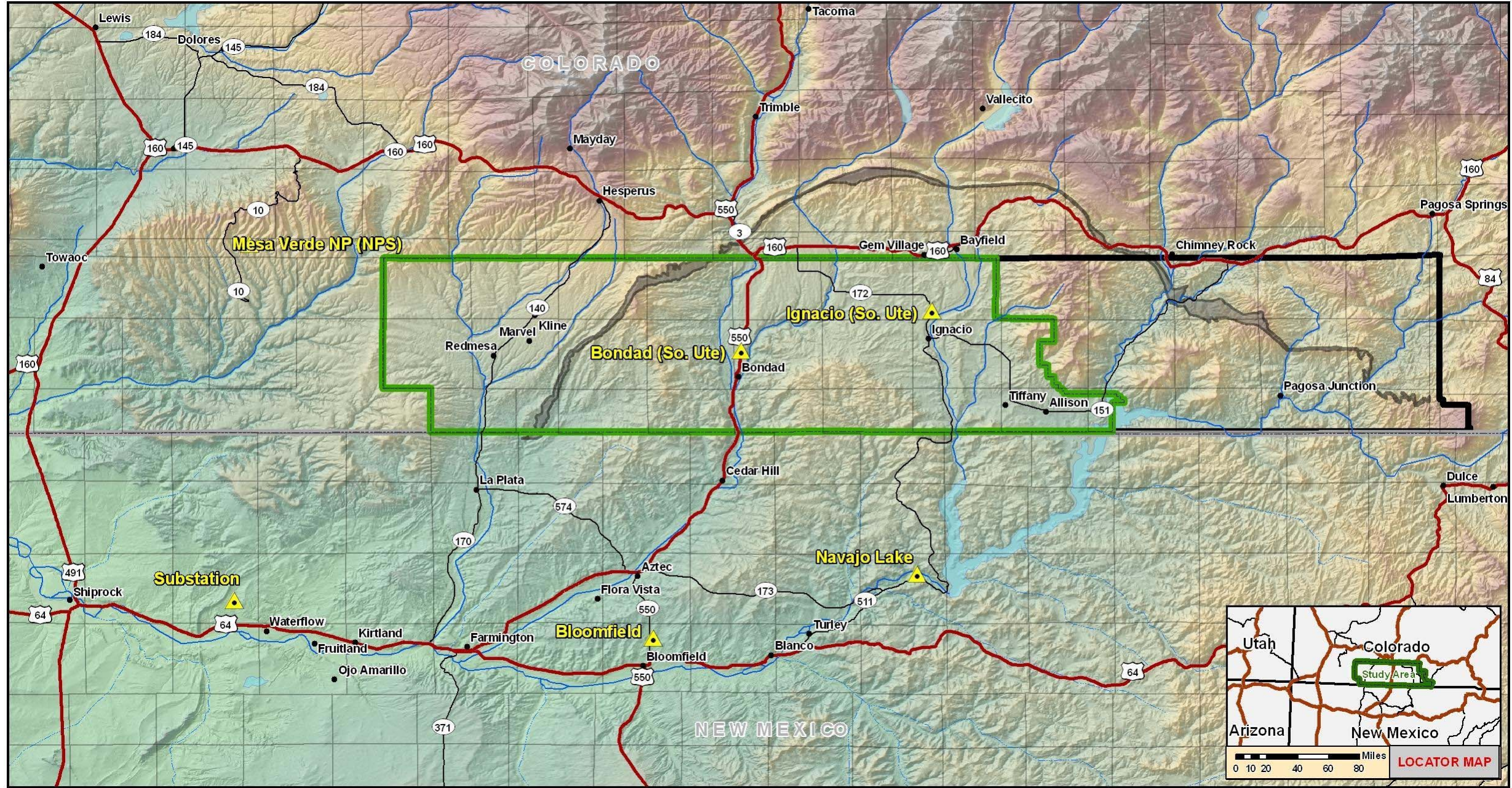
- Cities
- ◆ Wells Post 11/1/2002
- ◆ Conventional
- ◆ Coal Bed Methane
- Stream
- Stream Intermittent
- Highway
- Major Roads
- Other Roads
- ▭ Study Area Boundary
- ▭ Tribal Boundary
- ▭ Lakes
- ▭ Ownership - (Surface / Mineral)
- ▭ Allotted / Allotted
- ▭ Allotted / Fee
- ▭ Allotted / Tribal
- ▭ Fee / Allotted
- ▭ Fee / Fee
- ▭ Fee / Tribal
- ▭ Tribal / Allotted
- ▭ Tribal / Fee
- ▭ Tribal / Tribal
- ▭ Fruitland Outcrop

MAP 2-1

 1:254,935



	AIR QUALITY ANALYSIS AREA			<ul style="list-style-type: none"> • Cities ▭ State Boundary — Highway — Major Road ▭ Study Area Boundary ▭ Tribal Boundary 	<ul style="list-style-type: none"> ▭ Counties ▭ Air Quality Monitoring Data - 4 km Domain 		MAP 3-1  1:2,000,000	
	PROGRAMMATIC ENVIRONMENTAL ASSESSMENT							Tribal Boundary Acreage: 680,308 acres, 1063.5 square miles Study Area Acreage: 421,450 acres, 658.5 square miles
	SOUTHERN UTE INDIAN TRIBE	NORTH AMERICAN DATUM 1983						MAP LAYER SOURCES: SEE APPENDIX H
UTAH, ARIZONA, COLORADO, NEW MEXICO		1/29/2009						



**OZONE MONITORING STATIONS
IN THE FOUR CORNERS REGION**

PROGRAMMATIC ENVIRONMENTAL ASSESSMENT

SOUTHERN UTE INDIAN TRIBE	PROJECTION: GCS WGS 1984
MONTEZUMA, LA PLATA, AND ARCHULETA COUNTIES, COLORADO	1/29/2009

0 3.5 7 14 Miles

Tribal Boundary Acreage:
680,308 acres, 1063.5 square miles

Study Area Acreage:
421,450 acres, 658.5 square miles

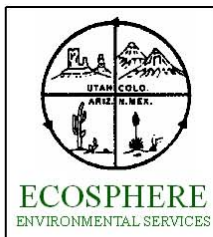
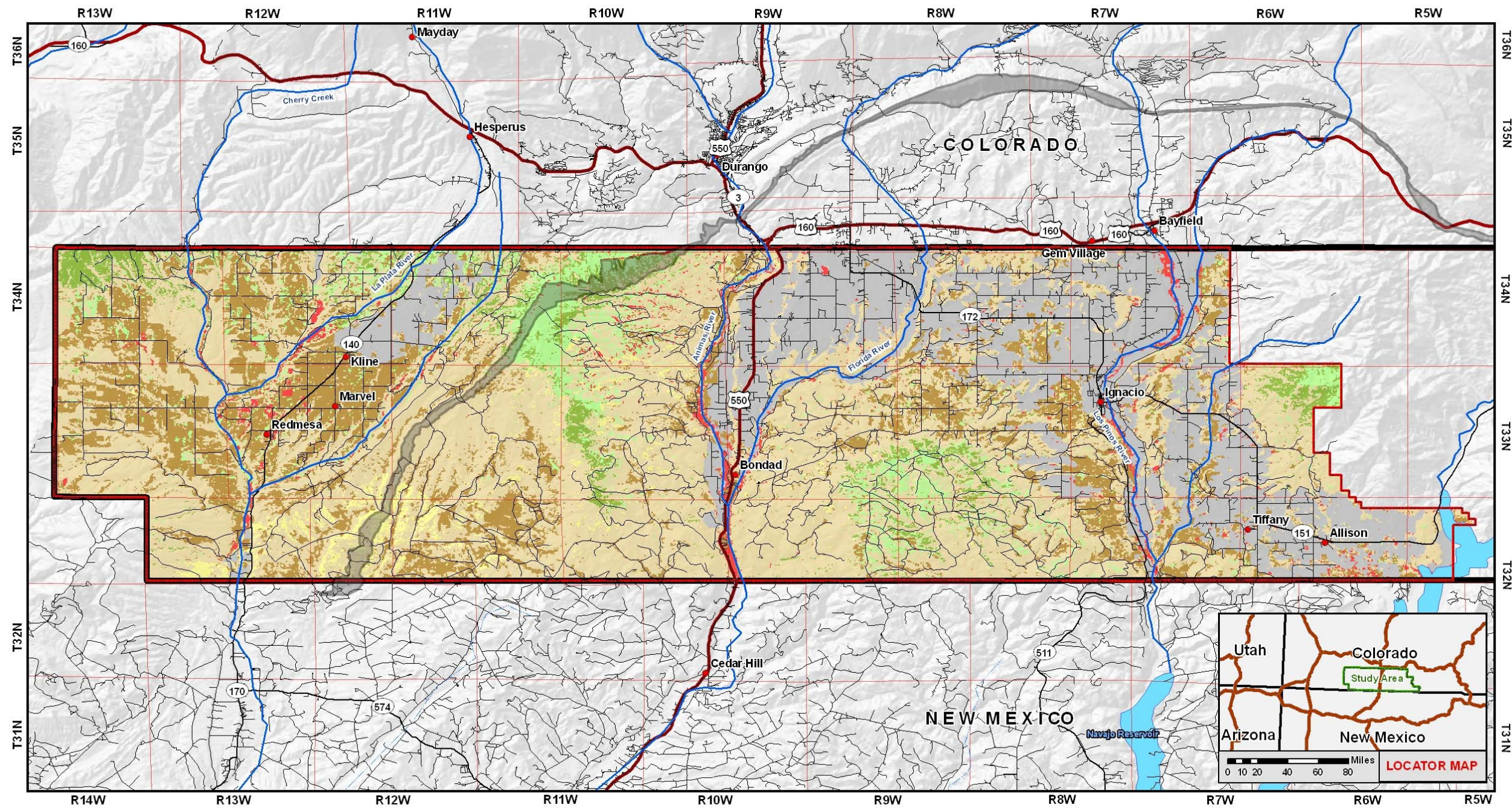
MAP LAYER SOURCES:
SEE APPENDIX H

- Cities
- Highway
- Major Road
- Stream
- Stream Intermittent
- ▲ Monitoring Locations
- ▭ Study Area Boundary
- ▭ State Boundary
- ▭ Tribal Boundary
- ▭ Lakes
- ▭ Fruitland Outcrop

MAP 3-2

↑
N

1:500,000



**SOUTHWEST REGIONAL GAP
LANDCOVER TYPES**

PROGRAMMATIC ENVIRONMENTAL ASSESSMENT

SOUTHERN UTE INDIAN TRIBE	PROJECTION: GCS WGS 1984
MONTEZUMA, LA PLATA, AND ARCHULETA COUNTIES, COLORADO	12/1/2008

0 2 4 8 Miles

Tribal Boundary Acreage:
680,308 acres, 1063.5 square miles

Study Area Acreage:
421,450 acres, 658.5 square miles

MAP LAYER SOURCES:
SEE APPENDIX H

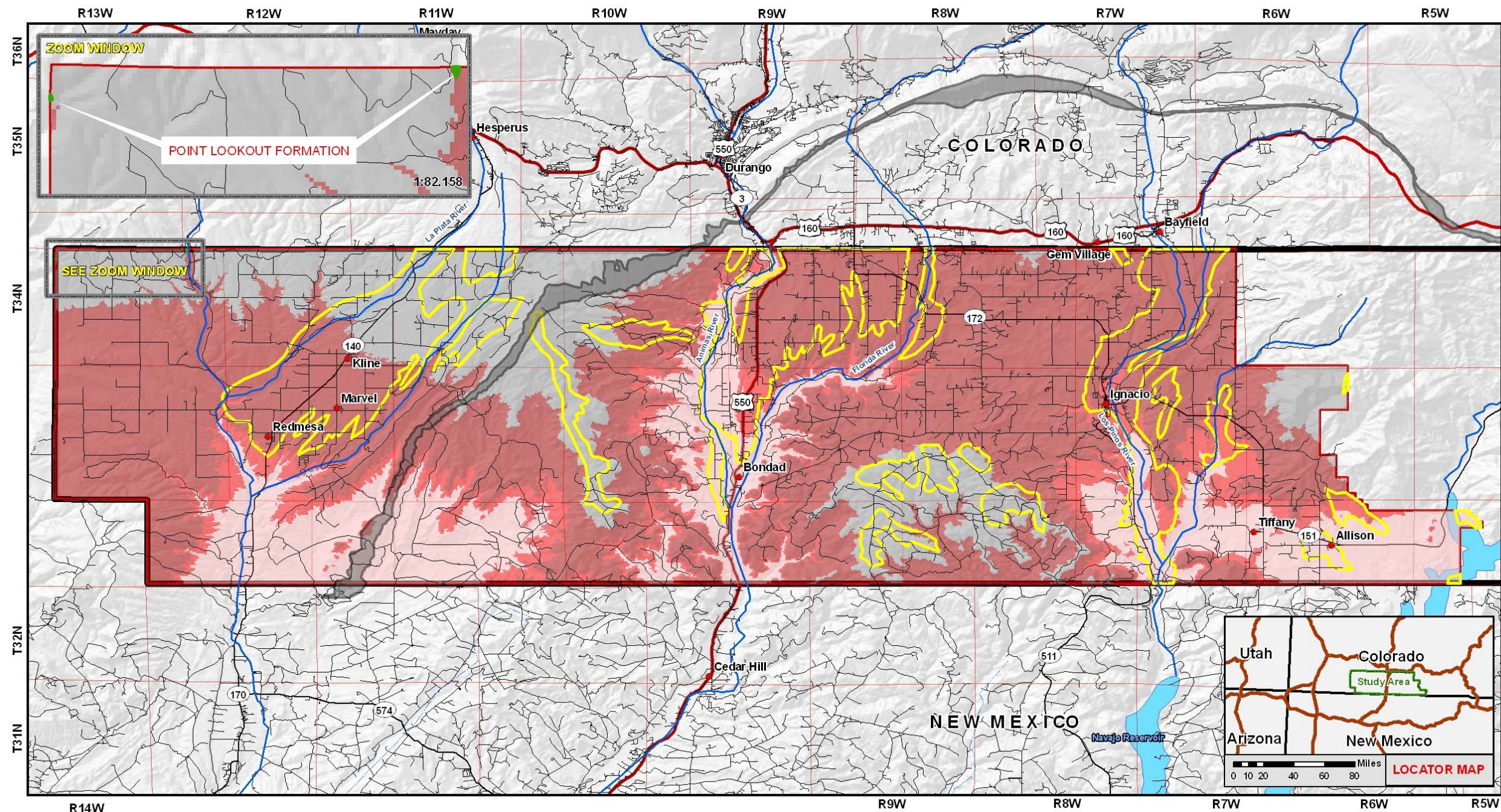
- Cities
- Stream
- Stream Intermittent
- Other Roads
- Highway
- Major Roads
- ▭ Study Area Boundary
- ▭ Tribal Boundary
- ▭ Lakes

- Vegetative Cover**
- ▭ Barren 1.9%
 - ▭ Disturbed 20.3%
 - ▭ Montane Shrubland/Grassland 5.9%
 - ▭ Montane Forest 3.5%
 - ▭ Pinon-Juniper/Juniper Savanna 49.6%
 - ▭ Semi-Desert and Salt Desert 17.0%
 - ▭ Wetland and Riparian 1.9%
 - ▭ Fruitland Outcrop

MAP 3-3

↑
N

1:254,935



POTENTIAL HABITAT FOR FEDERALLY LISTED AND COLORADO NATURAL HERITAGE PROGRAM PLANTS

PROGRAMMATIC ENVIRONMENTAL ASSESSMENT

SOUTHERN UTE INDIAN TRIBE | **PROJECTION: GCS WGS 1984**

MONTEZUMA, LA PLATA, AND ARCHULETA COUNTIES, COLORADO | 12/1/2008

0 2 4 8 Miles

Tribal Boundary Acreage:
680,308 acres, 1063.5 square miles

Study Area Acreage:
421,450 acres, 658.5 square miles

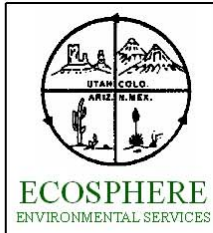
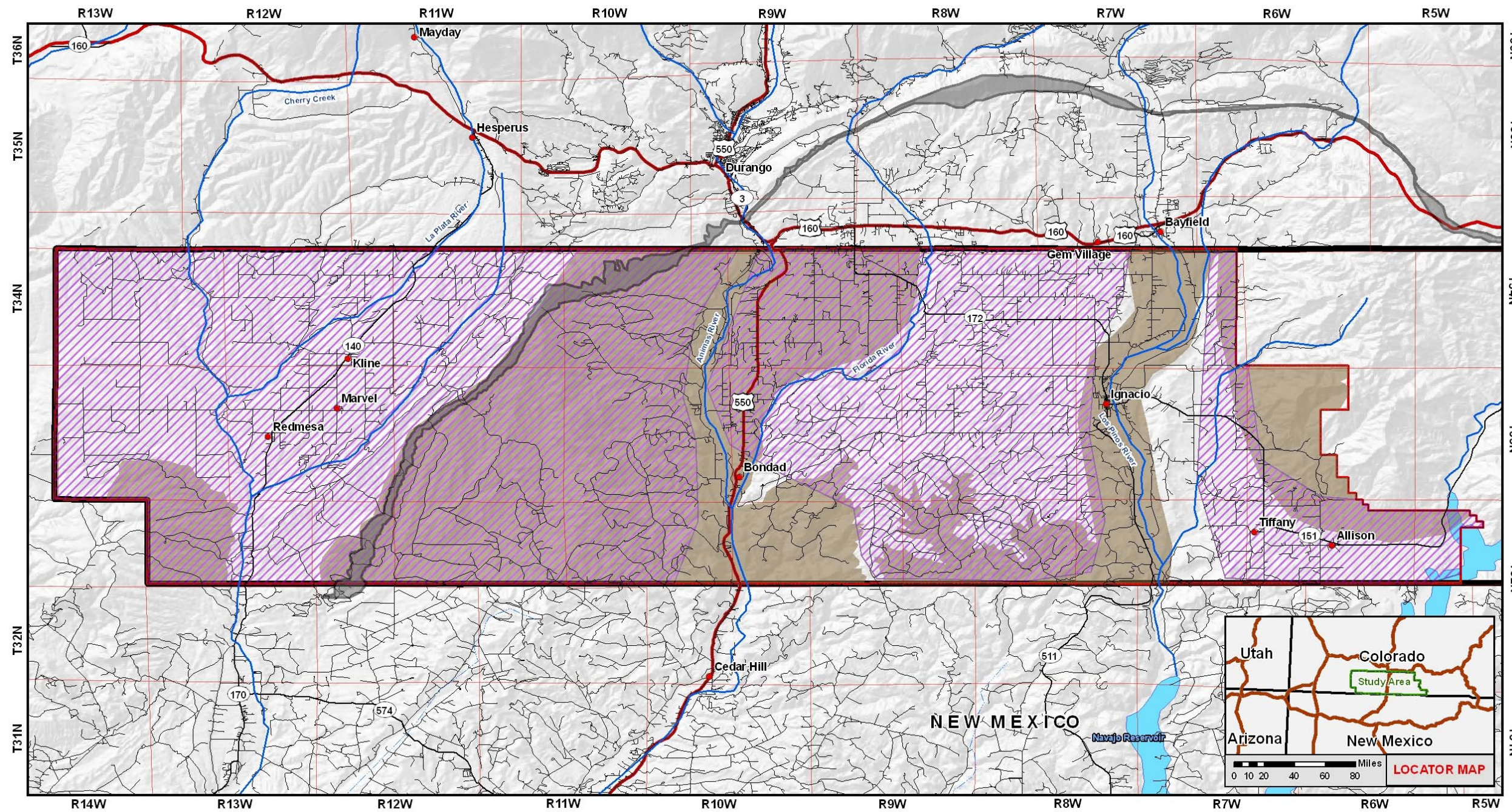
MAP LAYER SOURCES:
SEE APPENDIX H

- Cities
 - Stream
 - Stream Intermittent
 - Fruitland Outcrop
 - Geology
 - Habitat
 - Point Lookout (Mancos Milkvetch)
 - Quaternary Alluvium (Knowlton's Cactus)
- Elevation GRIDCODE**
- < 6400 ft
 - 6400 - 6500
 - 6500 - 7000
 - > 7000 ft
- Highway
 - Major Roads
 - Other Roads
 - Study Area Boundary
 - Tribal Boundary
 - Lakes

MAP 3-4

↑
N

1:254,935



**DEER AND ELK YEAR-ROUND
AND WINTER RANGE**

PROGRAMMATIC ENVIRONMENTAL ASSESSMENT

SOUTHERN UTE INDIAN TRIBE PROJECTION: GCS WGS 1984

MONTEZUMA, LA PLATA, AND ARCHULETA COUNTIES, COLORADO 12/1/2008

0 2 4 8 Miles

Tribal Boundary Acreage:
680,308 acres, 1063.5 square miles

Study Area Acreage:
421,450 acres, 658.5 square miles

MAP LAYER SOURCES:
SEE APPENDIX H

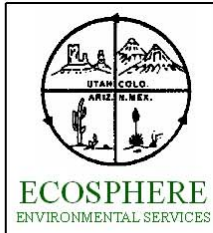
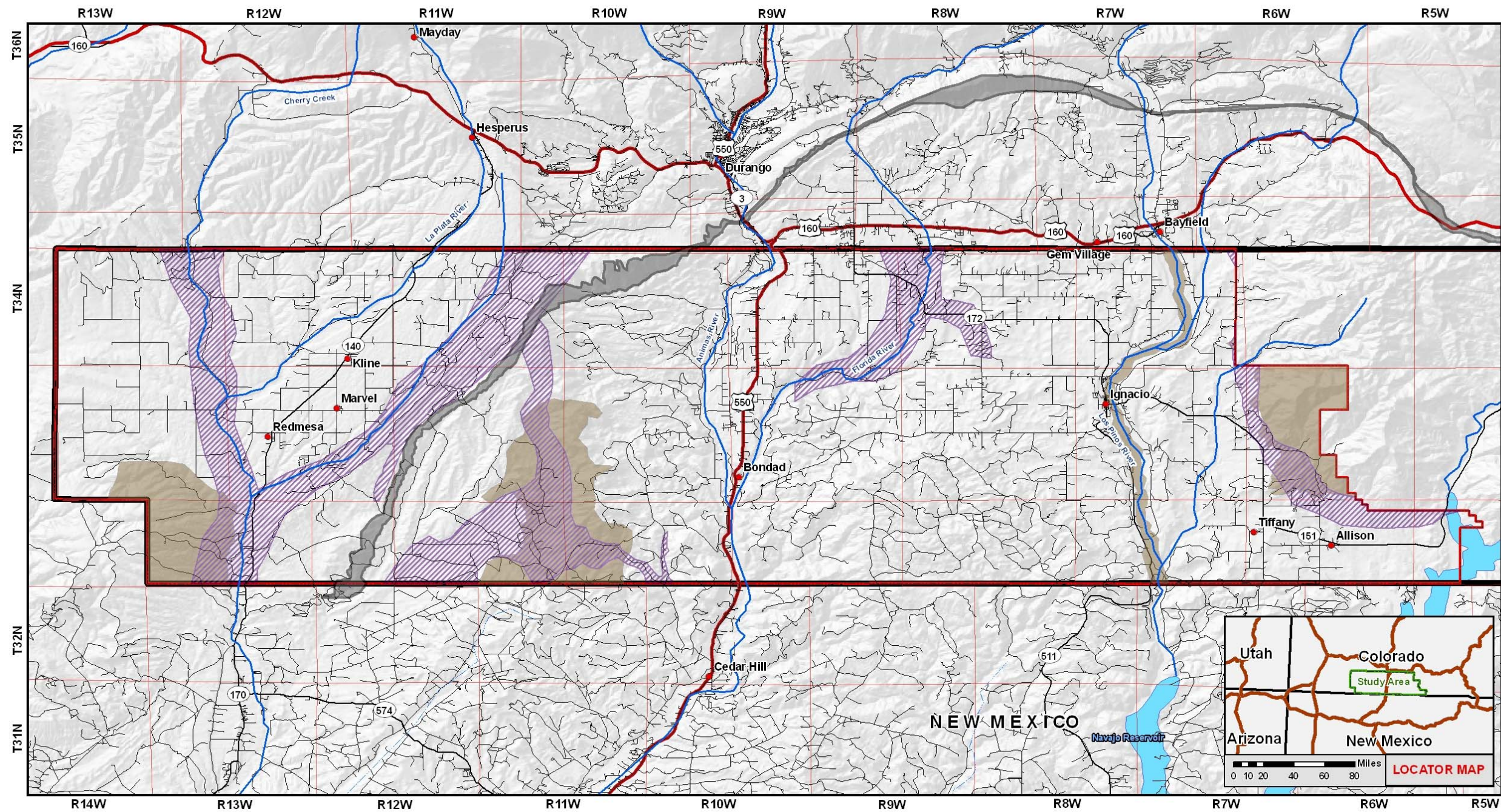
- Cities
- Stream
- Stream Intermittent
- Other Roads
- Highway
- Major Roads
- Lakes

- Wildlife Habitat**
- Type**
- Year-Round (Including Summer Range)
 - Winter (Including Summer Range)
 - Study Area Boundary
 - Tribal Boundary
 - Fruitland Coal Outcrop

MAP 3-5

↑
N

1:254,935



**DEER FAWNING AND ELK CALVING
AREAS AND MITIGATION CORRIDORS**

PROGRAMMATIC ENVIRONMENTAL ASSESSMENT

SOUTHERN UTE INDIAN TRIBE PROJECTION: GCS WGS 1984

MONTEZUMA, LA PLATA, AND ARCHULETA COUNTIES, COLORADO 12/1/2008

0 2 4 8 Miles

Tribal Boundary Acreage:
680,308 acres, 1063.5 square miles

Study Area Acreage:
421,450 acres, 658.5 square miles

MAP LAYER SOURCES:
SEE APPENDIX H

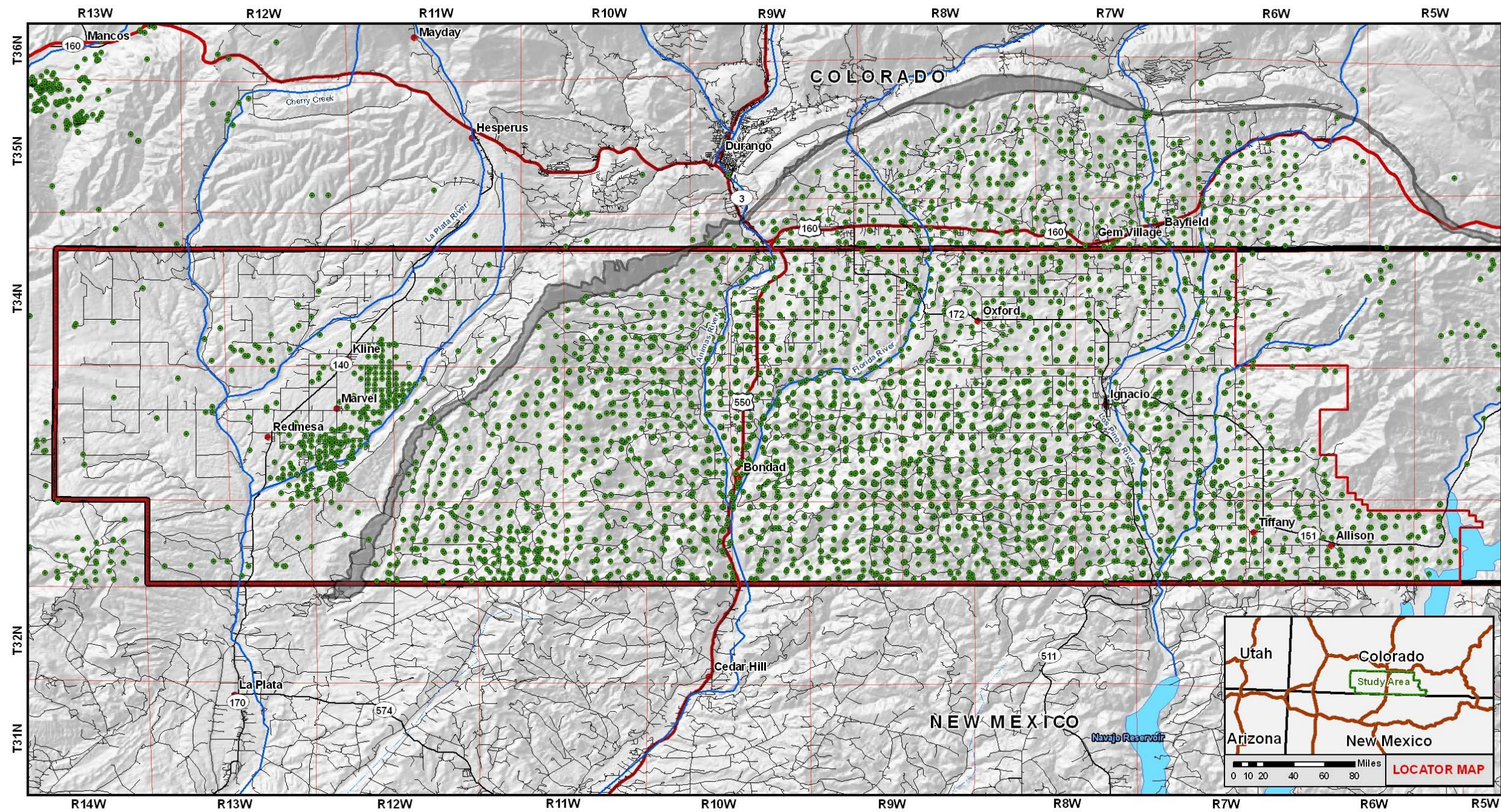
- Cities
- Stream
- Stream Intermittent
- Highway
- Major Roads
- Lakes
- Study Area Boundary

- Wildlife Habitat Type
- ▨ Migration
 - Calving/Fawning
 - Other Roads
 - ▭ Tribal Boundary
 - Fruitland Outcrop

MAP 3-6

↑
N

1:254,935



**PRODUCING OIL AND GAS
WELLS IN LA PLATA COUNTY**

PROGRAMMATIC ENVIRONMENTAL ASSESSMENT

SOUTHERN UTE INDIAN TRIBE	PROJECTION: GCS WGS 1984
MONTEZUMA, LA PLATA, AND ARCHULETA COUNTIES, COLORADO	12/1/2008

0 2 4 8 Miles

Tribal Boundary Acreage:
680,308 acres, 1063.5 square miles

Study Area Acreage:
421,450 acres, 658.5 square miles

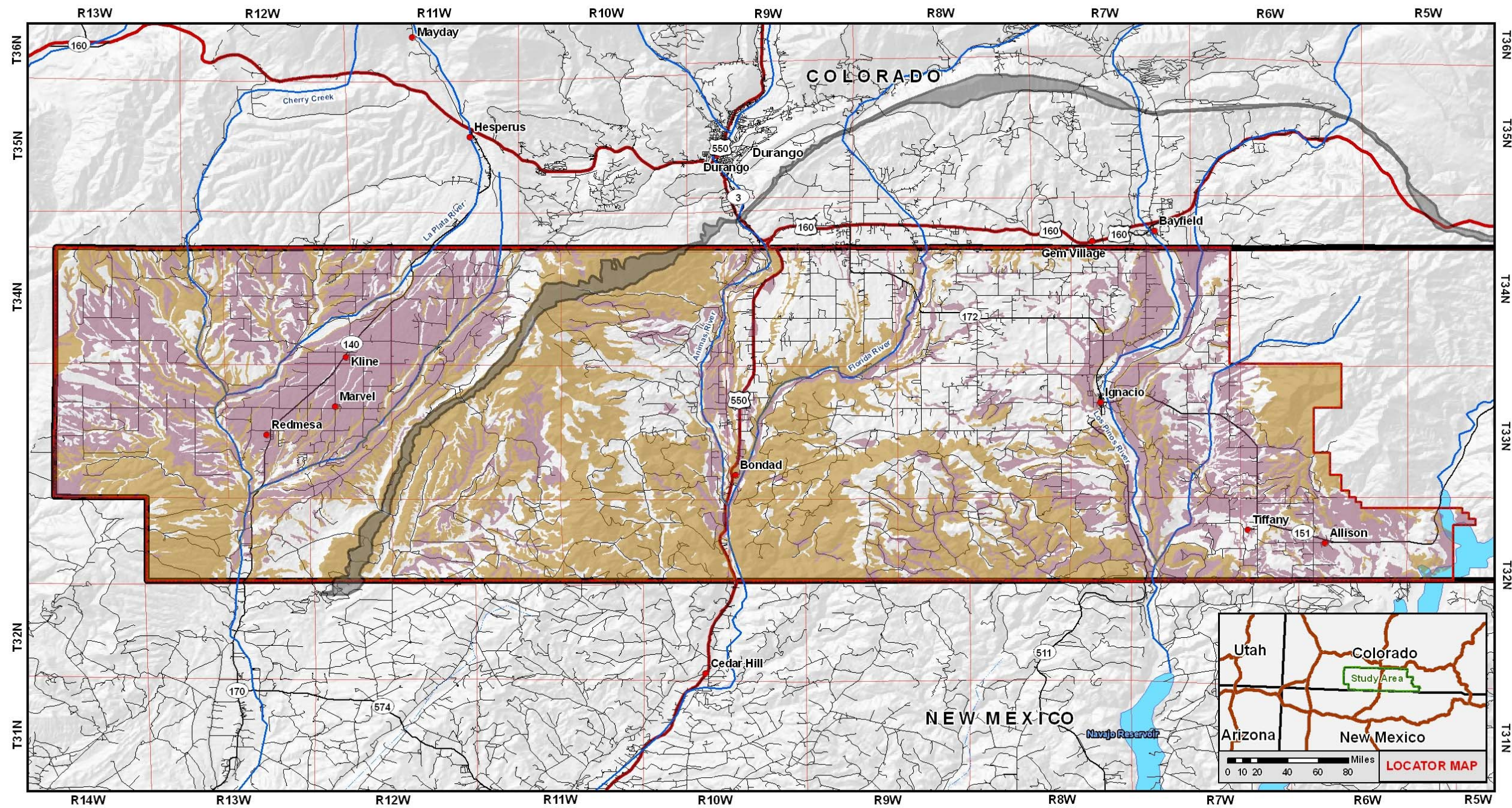
MAP LAYER SOURCES:
SEE APPENDIX H

- Cities
- All Wells
- Stream
- - - Stream Intermittent
- Highway
- Major Roads
- Other Roads
- Study Area Boundary
- Tribal Boundary
- Lakes
- Fruitland Outcrop

MAP 3-7

↑
N

1:254,935



**PRIME FARMLAND AND
HIGHLY ERODIBLE SOILS**

PROGRAMMATIC ENVIRONMENTAL ASSESSMENT

SOUTHERN UTE INDIAN TRIBE PROJECTION: GCS WGS 1984

MONTEZUMA, LA PLATA, AND ARCHULETA COUNTIES, COLORADO 12/1/2008

0 2 4 8 Miles

Tribal Boundary Acreage:
680,308 acres, 1063.5 square miles

Study Area Acreage:
421,450 acres, 658.5 square miles

MAP LAYER SOURCES:
SEE APPENDIX H

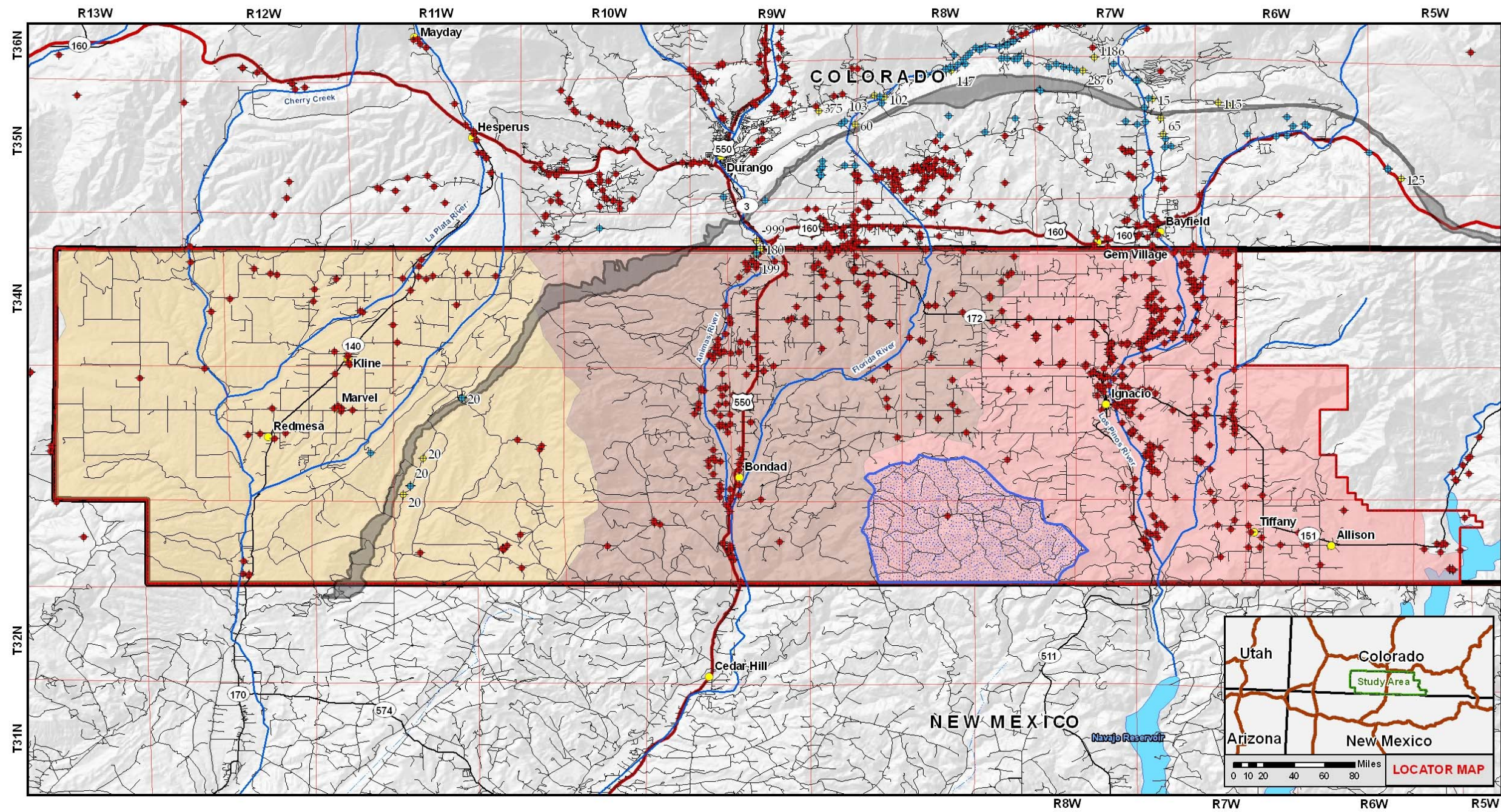
- Cities
- Stream
- Stream Intermittent
- Highway
- Major Roads
- Other Roads

- Soils**
- Highly Erodible Soil
 - Prime Farmland
 - Study Area Boundary
 - ▬ Tribal Boundary
 - Lakes
 - Fruitland Outcrop

MAP 3-8

↑
N

1:254,935



WATERSHEDS AND PERMITTED WATER WELLS

PROGRAMMATIC ENVIRONMENTAL ASSESSMENT

SOUTHERN UTE INDIAN TRIBE	PROJECTION: GCS WGS 1984
MONTEZUMA, LA PLATA, AND ARCHULETA COUNTIES, COLORADO	12/1/2008

0 2 4 8 Miles

Tribal Boundary Acreage:
680,308 acres, 1063.5 square miles

Study Area Acreage:
421,450 acres, 658.5 square miles

MAP LAYER SOURCES:
SEE APPENDIX H

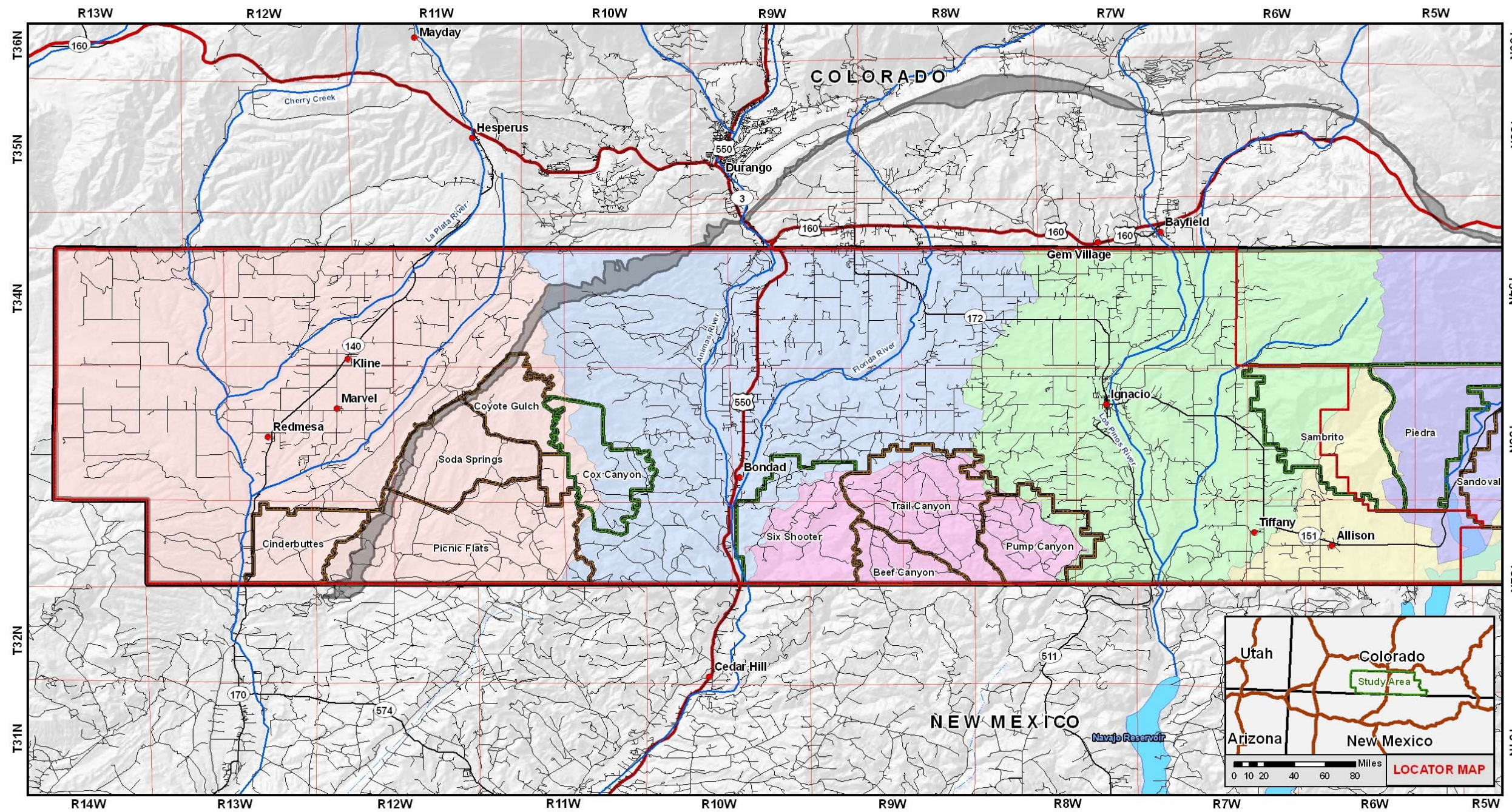
- Cities
- ◆ Deeded Wells 1.5 miles
- ◆ Other Wells 1.5 miles
- ◆ Permitted Water Wells
- Stream
- - - Stream Intermittent
- Other Roads
- Highway
- Major Roads

- Study Area Boundary
- Tribal Boundary
- Lakes
- Watershed USGS
- Animas
- Middle San Juan
- Upper San Juan
- Trail Canyon Watershed
- Fruitland Outcrop

MAP 3-9

↑
N

1:254,935



MANAGEMENT UNITS AND GRAZING UNITS

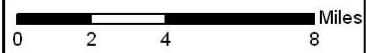
PROGRAMMATIC ENVIRONMENTAL ASSESSMENT

SOUTHERN UTE INDIAN TRIBE

PROJECTION: GCS WGS 1984

MONTEZUMA, LA PLATA, AND ARCHULETA COUNTIES, COLORADO

12/1/2008



Tribal Boundary Acreage:
680,308 acres, 1063.5 square miles
Study Area Acreage:
421,450 acres, 658.5 square miles

MAP LAYER SOURCES:
SEE APPENDIX H

- Cities
- Stream
- Stream Intermittent
- Other Roads
- ▬ Fruitland Outcrop
- Highway
- Major Roads

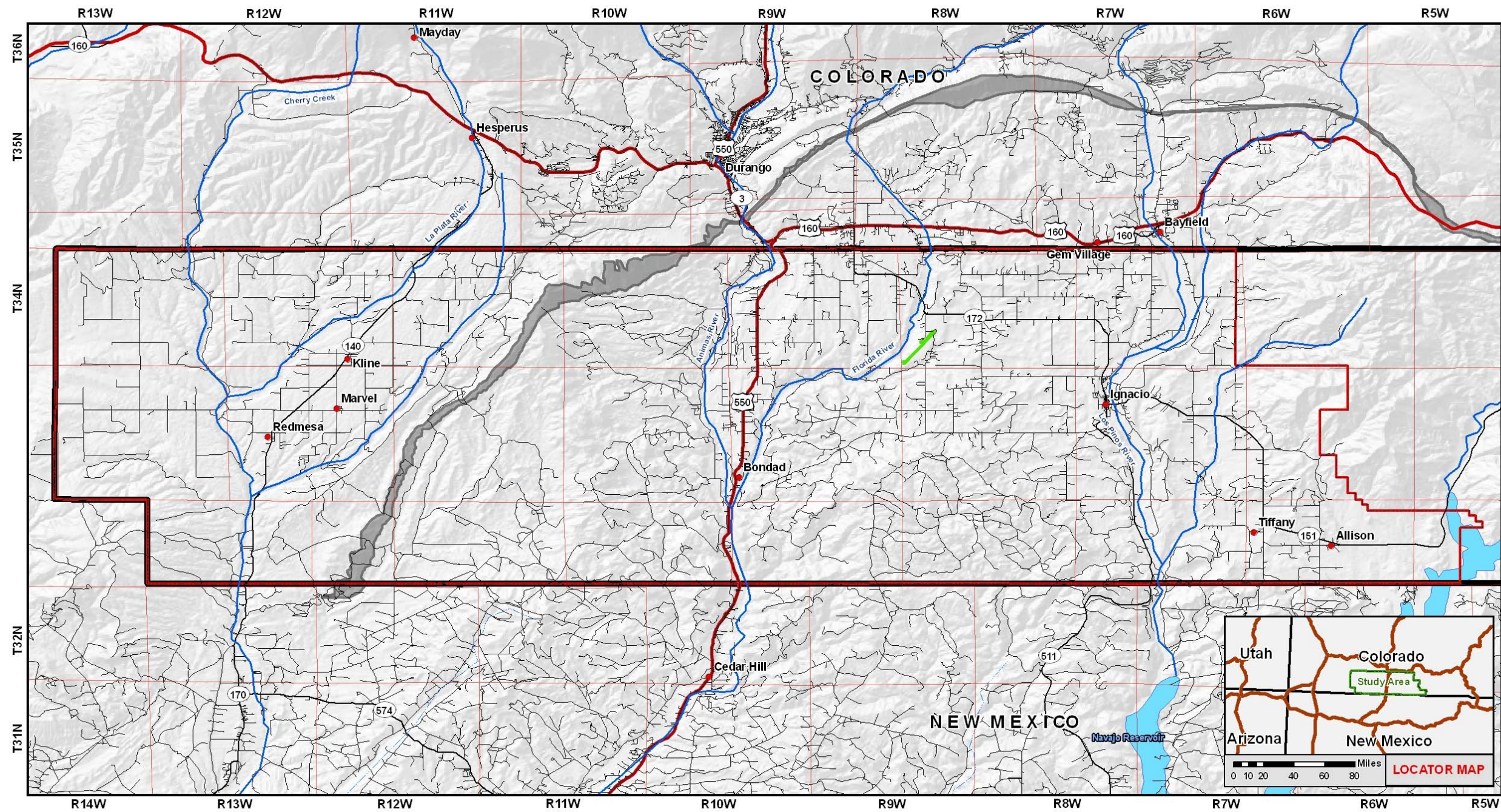
- Management Units**
- Animas
 - La Plata
 - Los Pinos
 - Lower San Juan
 - Mesa Mountains
 - Piedra
 - Upper San Juan

- Range Lands**
- Grazing
 - Wildlife Habitat
 - Tribal Boundary
 - Lakes
 - Study Area

MAP 3-10



1:254,935



TRANSPORTATION CORRIDORS

PROGRAMMATIC ENVIRONMENTAL ASSESSMENT

SOUTHERN UTE INDIAN TRIBE PROJECTION: GCS WGS 1984

MONTEZUMA, LA PLATA, AND ARCHULETA COUNTIES, COLORADO 12/1/2008

0 2 4 8 Miles

Tribal Boundary Acreage:
680,308 acres, 1063.5 square miles

Study Area Acreage:
421,450 acres, 658.5 square miles

MAP LAYER SOURCES:
SEE APPENDIX H

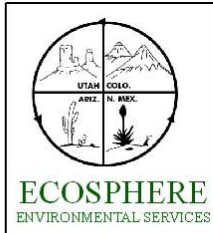
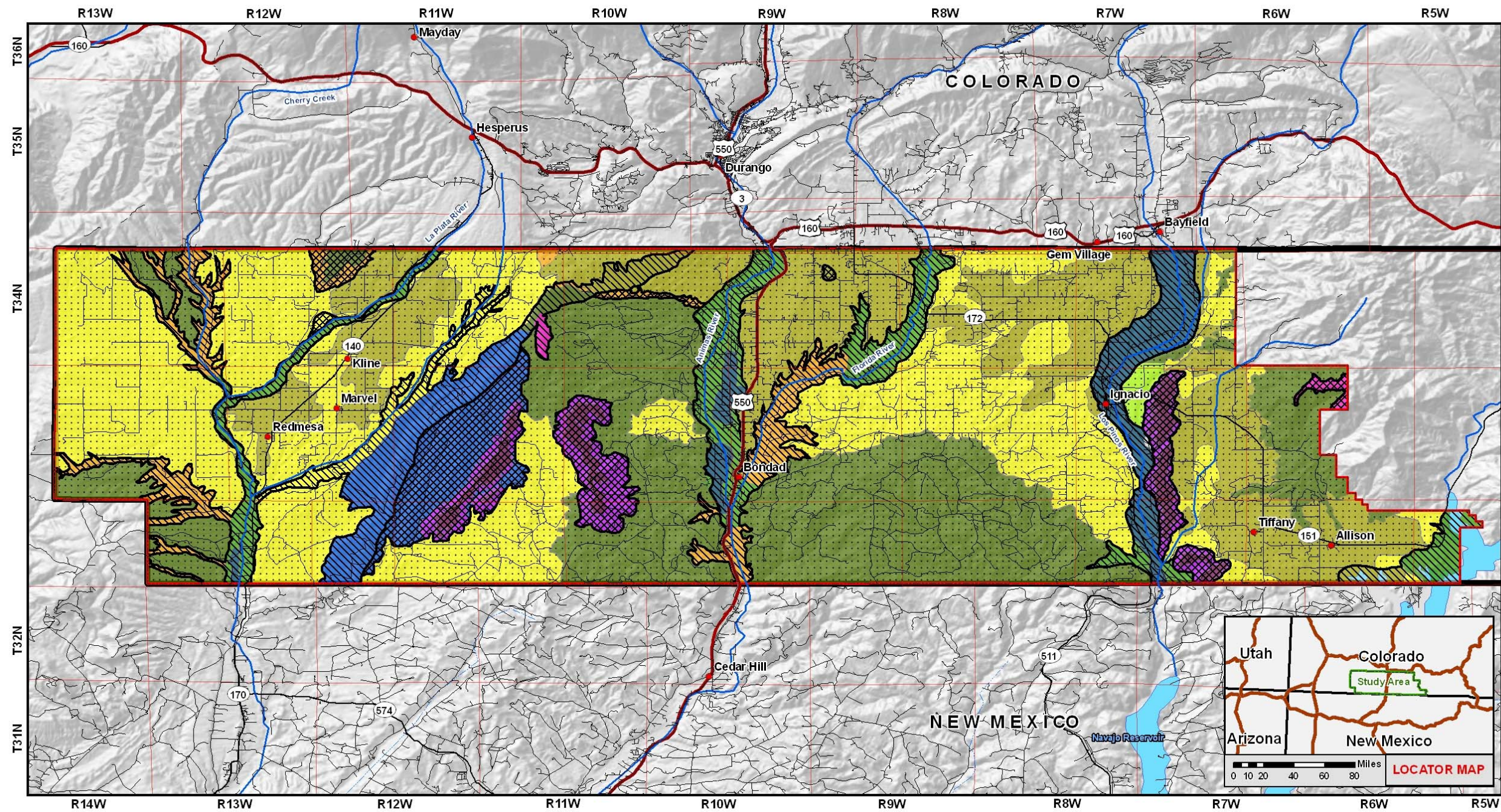
- Cities
- Stream
- Stream Intermittent
- Highway
- Major Roads
- Other Roads

- ▭ Study Area Boundary
- ▭ Airport
- ▭ Tribal Boundary
- ▭ Lakes
- ▭ Fruitland Outcrop

MAP 3-11

↑
N

1:254,935



SCENIC QUALITY

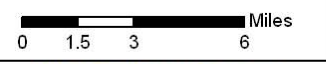
PROGRAMMATIC ENVIRONMENTAL ASSESSMENT

SOUTHERN UTE INDIAN TRIBE

PROJECTION: GCS WGS 1984

MONTEZUMA, LA PLATA, AND ARCHULETA COUNTIES

3/11/2009



Tribal Boundary Acreage:
680,308 acres, 1063.5 square miles

Study Area Acreage: 421,450 acres
658.5 square miles

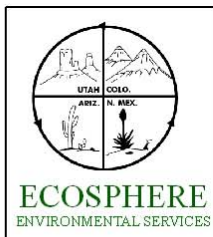
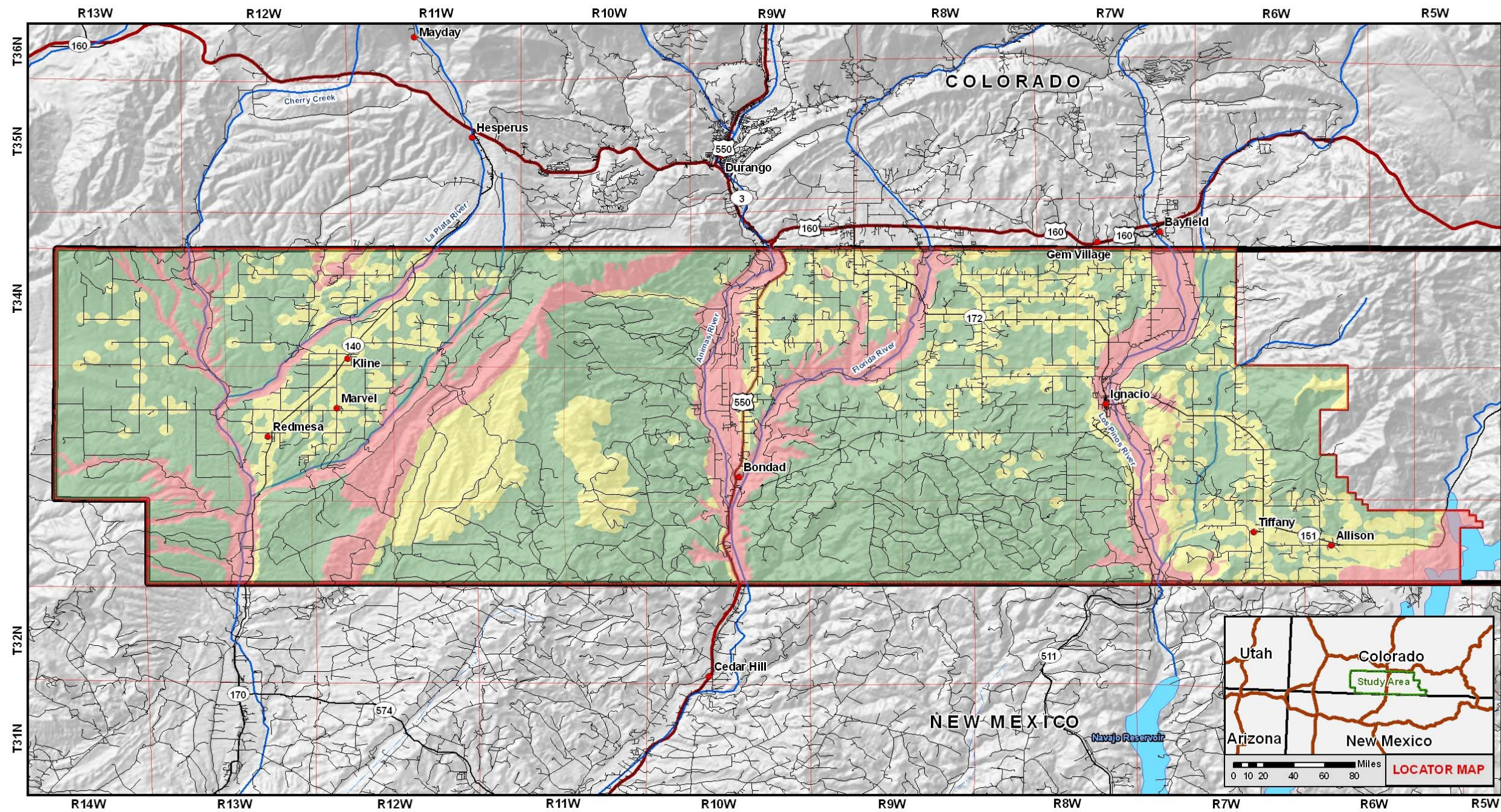
MAP LAYER SOURCES:
SEE APPENDIX H

- Cities
 - Stream
 - Stream Intermittent
 - Highway
 - Other Roads
 - ▭ Study Area Boundary
 - ▭ Tribal Boundary
 - ▭ Lakes
- | | |
|--|---|
| <p>Scenic Quality Classification</p> <ul style="list-style-type: none"> ▭ A - Distinctive ▭ B - Common ▭ C - Minimal <p>Physiographic Features</p> <ul style="list-style-type: none"> ▭ Canyon ▭ Mesa Rim ▭ Mesa Top ▭ Mountain | <ul style="list-style-type: none"> ▭ Reservoir ▭ Ridges and Narrow Valleys ▭ River Valley ▭ River Valley/Agricultural ▭ Rolling Upland ▭ Rolling Upland/Agricultural ▭ Upland Hills ▭ Upland Hills/Agricultural |
|--|---|

MAP 3-12



1:254,935



VISUAL RESOURCE VALUES	
PROGRAMMATIC ENVIRONMENTAL ASSESSMENT	
SOUTHERN UTE INDIAN TRIBE	PROJECTION: GCS WGS 1984
MONTEZUMA, LA PLATA, AND ARCHULETA COUNTIES	3/11/2009

Tribal Boundary Acreage:
 680,308 acres, 1063.5 square miles
Study Area Acreage: 421,450 acres
 658.5 square miles
MAP LAYER SOURCES:
 SEE APPENDIX H

- Cities
- Stream
- - - Stream Intermittent
- Highway
- Other Roads
- Study Area Boundary
- Tribal Boundary
- Lakes
- Visual Sensitivity Level**
- II-Low Change
- III-Moderate Change
- IV-High Change

MAP 3-13

1:254,935