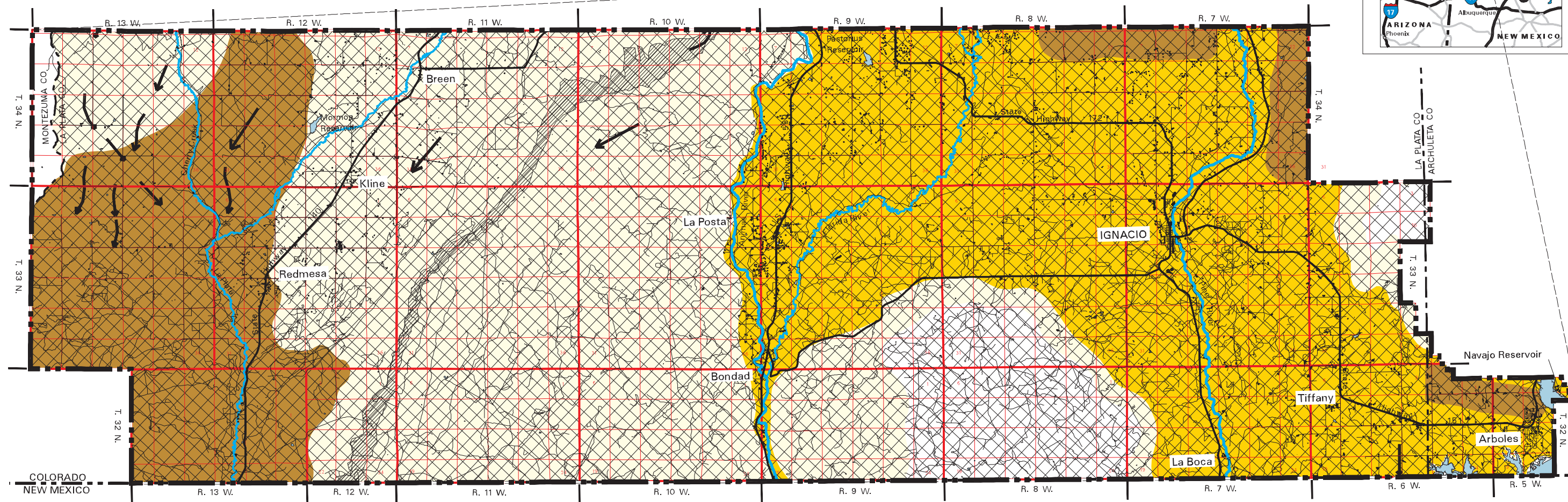


LOCATION MAP



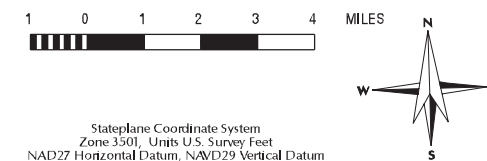
General Reference Features:

- Township/Range Lines
- Section Lines
- Road
- Highway
- Study Boundary
- State Line
- County Line
- River
- Lake / Reservoir
- Fruitland Outcrop
- Residence

Resource Legend:

- Deer Winter Range
- Deer Severe Winter Range
- Deer Winter Concentration Areas
- Deer Summer Range
- Deer Migration Patterns (Shown with an arrow)

SCALE 1 : 214200



Stateplane Coordinate System
Zone 3501, Units U.S. Survey Feet
NAD27 Horizontal Datum, NAD29 Vertical Datum

September 10, 1999

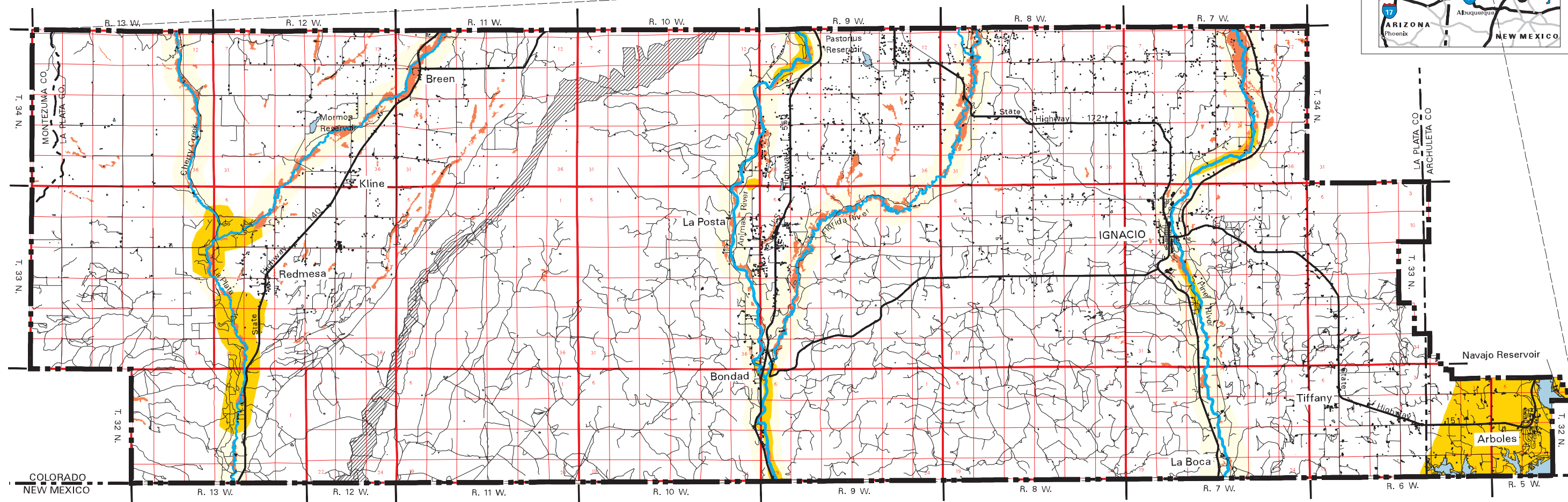
Oil and Gas Development on the Southern Ute Indian Reservation EIS

MULE DEER RANGES AND MIGRATION PATTERNS



SOURCE: State of CO Division of Wildlife, Department of Natural Resources, 10/96

LOCATION MAP



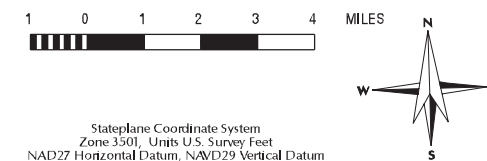
General Reference Features:

- Township/Range Lines
- Section Lines
- Road
- Highway
- Study Boundary
- State Line
- County Line
- River
- Lake / Reservoir
- Fruitland Outcrop
- Residence

Resource Legend:

- Bald Eagle Winter Range
- Bald Eagle Winter Concentration Area
- Southwestern Willow Flycatcher Potential Habitat

SCALE 1 : 214200



Stateplane Coordinate System
Zone 3501, Units U.S. Survey Feet
NAD27 Horizontal Datum, NAD29 Vertical Datum

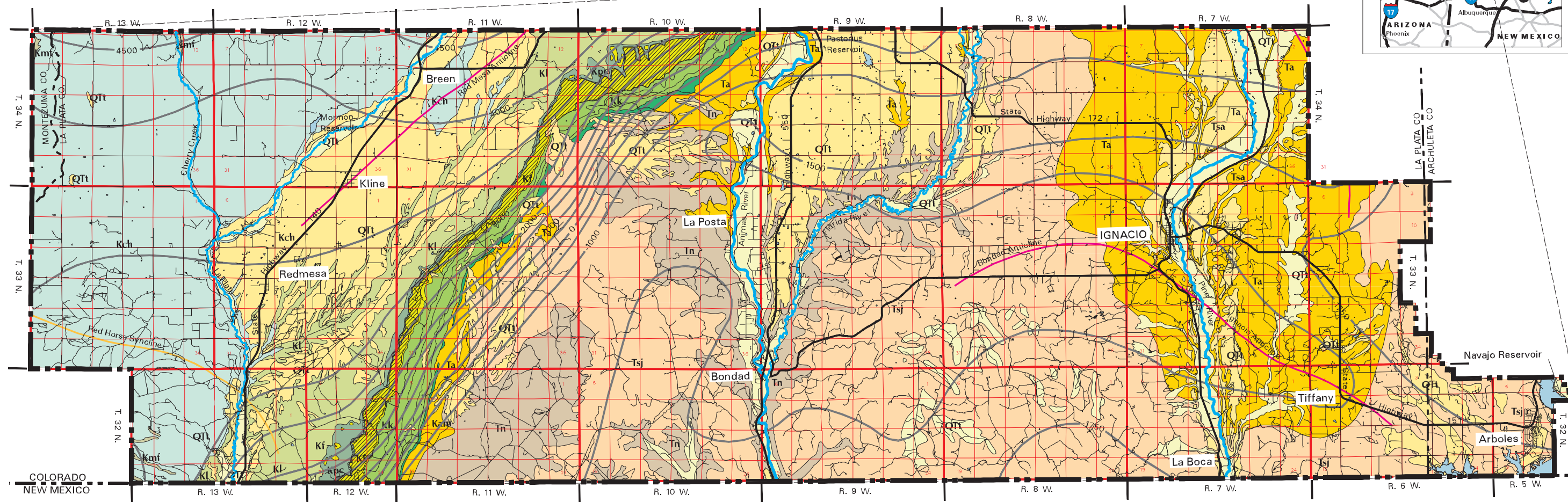
September 15, 1999

**Oil and Gas Development on the
Southern Ute Indian Reservation EIS**
**SELECTED HABITATS OF THREATENED AND
ENDANGERED WILDLIFE SPECIES**



SOURCE: State of CO Division of Wildlife, Department of Natural Resources, 10/96

LOCATION MAP



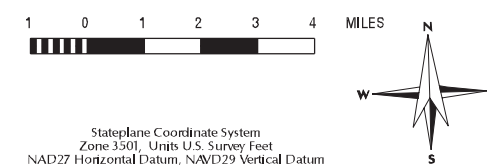
General Reference Features:

- Township/Range Lines
- Section Lines
- Road
- Highway
- Study Boundary
- State Line
- County Line
- River
- Lake / Reservoir
- Fruitland Outcrop

Resource Legend:

- Qa Alluvium (Holocene and Pleistocene)
- QTt Terrace Deposits (Pleistocene and Pliocene)
- Tsj San Jose Formation (Eocene)
- Tn Nacimiento Formation (Paleocene)
- Ta Upper part of the Animas Formation (Paleocene)
- Kam Animas Formation McDermott Member (Upper Cretaceous)
- Kk Kirtland Shale (Upper Cretaceous)
- Kf Fruitland Formation (Upper Cretaceous)
- Kpc Pictured Cliffs Sandstone (Upper Cretaceous)
- Kl Lewis Shale (Upper Cretaceous)
- Kch Cliff House Sandstone (Upper Cretaceous)
- Kmf Menefee Formation (Upper Cretaceous)
- Structure Contours (Drawn on base of Dakota Sandstone and Burro Canyon Formation, undivided; contour interval 500 feet; supplementary contour at -1750 feet; datum is mean sea level).
- Anticlines
- Synclines

SCALE 1 : 214200



Stateplane Coordinate System
Zone 3501, Units U.S. Survey Feet
NAD27 Horizontal Datum, NAD29 Vertical Datum

September 10, 1999

Oil and Gas Development on the Southern Ute Indian Reservation EIS

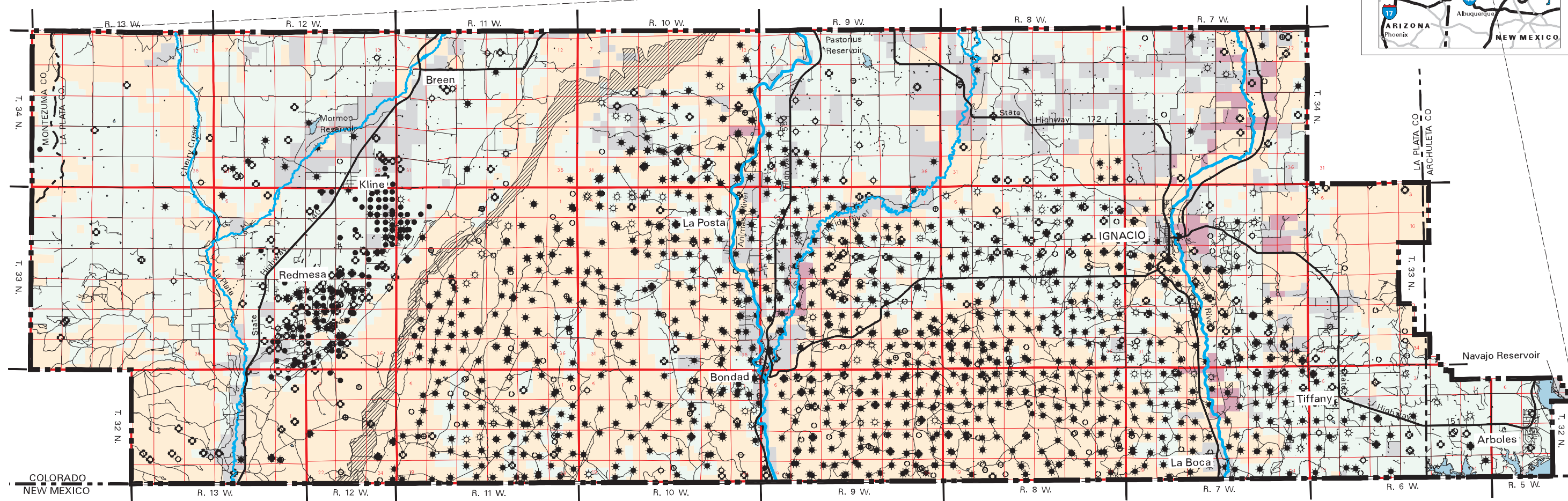
GEOLOGY

MAP 10



SOURCE: Based on Condon, 1992 modified with Levings and others, 1990, and Kelly, 1955

LOCATION MAP



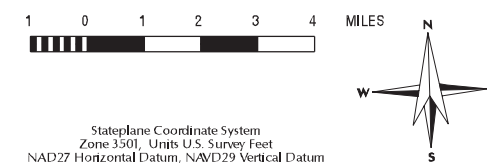
General Reference Features:

- Township/Range Lines
- Section Lines
- Road
- Highway
- Study Boundary
- State Line
- County Line
- River
- Lake / Reservoir
- Fruitland Outcrop

Resource Legend:

- Tribal Coal / Tribal Oil & Gas
- Tribal Coal / Fee Oil & Gas (Disputed Lands)
- Allotted Lands
- Fee Lands
- Producing Gas Well
- Oil Well
- Oil and Gas Well
- Shut-in Gas Well
- Location
- Dry and Abandoned
- Plugged and Abandoned
- Temporarily Abandoned
- Other

SCALE 1 : 214200



Stateplane Coordinate System
Zone 3501, Units U.S. Survey Feet
NAD27 Horizontal Datum, NAD29 Vertical Datum

September 10, 1999

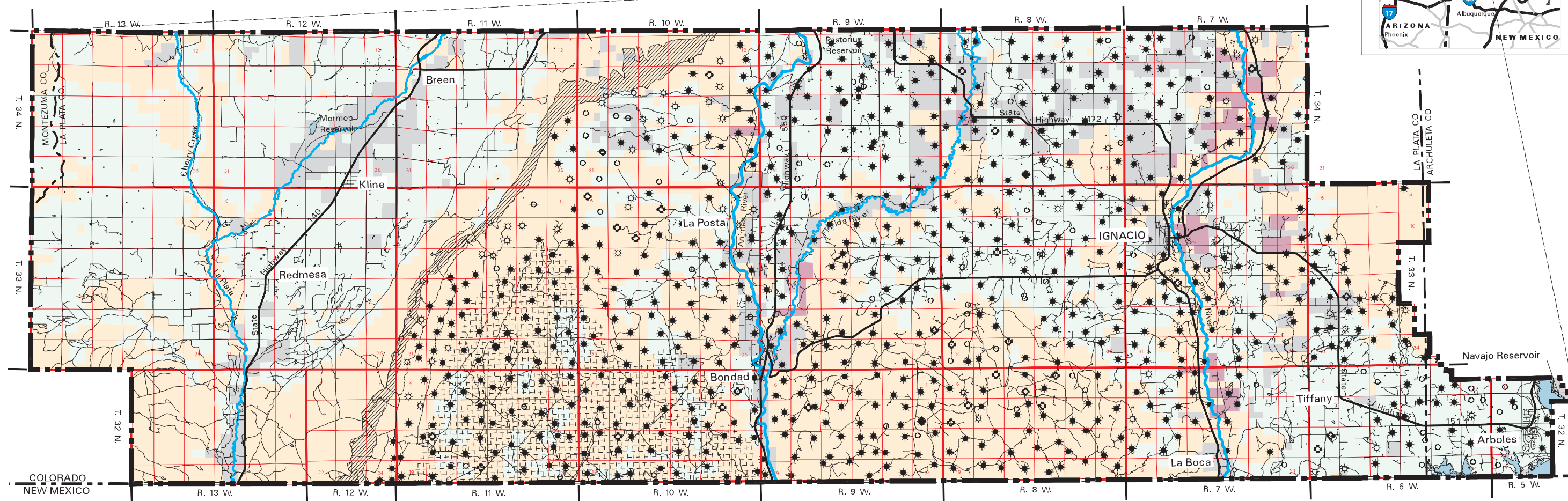
Oil and Gas Development on the Southern Ute Indian Reservation EIS

CONVENTIONAL WELLS AND SUBSURFACE OWNERSHIP



SOURCE: Well information: Dwights Energy Data, BLM 09/23/96.
Subsurface ownership: Southern Ute Indian Tribe Energy Resources Division: 12/14/95

LOCATION MAP



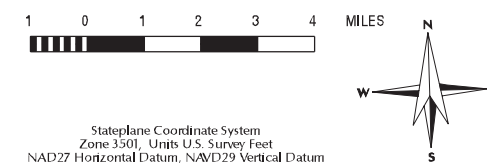
General Reference Features:

- Township/Range Lines
- Section Lines
- Road
- Highway
- Study Boundary
- State Line
- County Line
- River
- Lake / Reservoir
- Fruitland Outcrop

Resource Legend:

- Tribal Coal / Tribal Oil & Gas
- Tribal Coal / Fee Oil & Gas (Disputed Lands)
- Allotted Lands
- Fee Lands
- Fairway
- Producing Gas Well
- Shut-in Gas Well
- Location
- Dry and Abandoned
- Plugged and Abandoned
- Temporarily Abandoned
- Other

SCALE 1 : 214200



Stateplane Coordinate System
Zone 3501, Units U.S. Survey Feet
NAD27 Horizontal Datum, NAD29 Vertical Datum

September 14, 1999

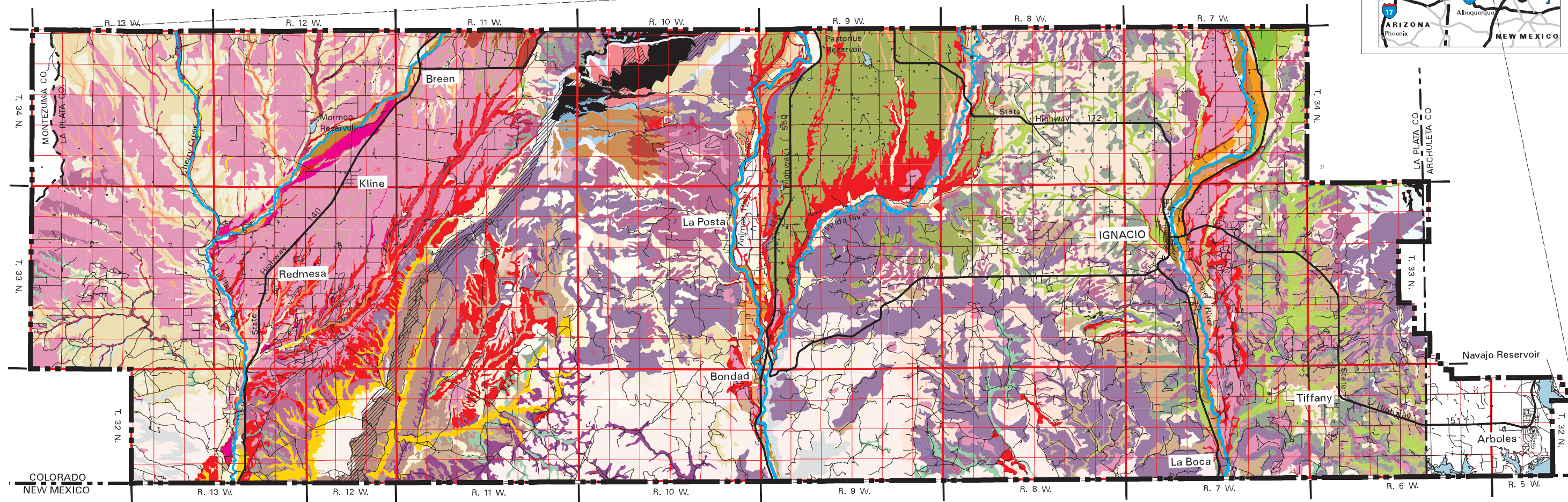
Oil and Gas Development on the Southern Ute Indian Reservation EIS

FRUITLAND WELLS AND SUBSURFACE OWNERSHIP



SOURCE: Well information: Dwights Energy Data, BLM 09/23/96.
Subsurface ownership: Southern Ute Indian Tribe Energy Resources Division: 12/14/95

LOCATION MAP



General Reference Features:

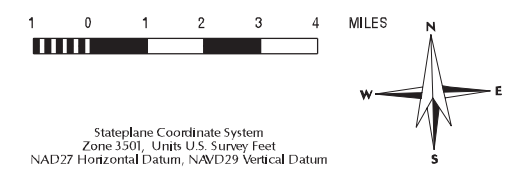
- Township/Range Lines
- Section Lines
- Road
- Highway
- Study Boundary
- State Line
- County Line
- River
- Lake / Reservoir
- Fruitland Outcrop

Resource Legend:

- | | | | | |
|----------------------------------|--|------------------------------|---|---------------------------|
| Agua Fria loam | Dulce-Travessilla-Rock outcrop complex | Mikim loam | Sedillo gravelly loam | Witt loam 3-8% slopes |
| Arboles silty clay loam | Durango cobbly loam | Nehar stony sandy loam | Shalona loam | Witt loam, eroded |
| Arboles clay | Falfa clay loam 1-3% slopes | Nutrioso loam | Sili clay loam 1-3% slopes | Yenlo Florida sandy loams |
| Archuleta-Sanchez complex | Falfa clay loam 3-8% slopes | Panitchen-Dominguez variant | Sili clay loam 3-6% slopes | Zau stony loam |
| Baca Variant loam | Fluvuquents | Pastorius cobbly loam | Simpatico loam | Zyme clay loam |
| Badland | Goldvale very stony fine sandy loam | Pescar fine sandy loam | Sycle fine sandy loam | Zyme-Rock outcrop complex |
| Bayfield silty clay loam | Haploborolls-Rubble Land complex | Picante-Rock outcrop complex | Tefton loam | |
| Bayfield clay loam gullied | Harlan cobbly loam | Pinata loam 1-12% slopes | Umbarg loam | |
| Bayfield silty clay loam, seeped | Harlan cobbly loam, moist | Pinata loam 12-40% slopes | Ustic Torriorthents-Ustollic Haplargids complex | |
| Big Blue clay loam | Herm loam | Pits, gravel | Valto-Rock outcrop complex | |
| Bodot clay | Hesperus loam | Plome fine sandy loam | Vernal fine sandy loam | |
| Buckle loam | Lazear stony loam | Pulpit loam | Vernal-Sedillo complex | |
| Corta loam 1-3% slopes | Lazear-Rock outcrop complex | Riverwash | Vosburg fine sandy loam | |
| Corta loam 3-8% slopes | | Rock outcrop | Witt loam 1-3% slopes | |

NOTE: Soils of the same series have been grouped together for the generalized map; however, detailed analysis is based on phases of the soil series.

SCALE 1 : 214200



Stateplane Coordinate System
Zone 3501, Units U.S. Survey Feet
NAD27 Horizontal Datum, NAD29 Vertical Datum

September 10, 1999

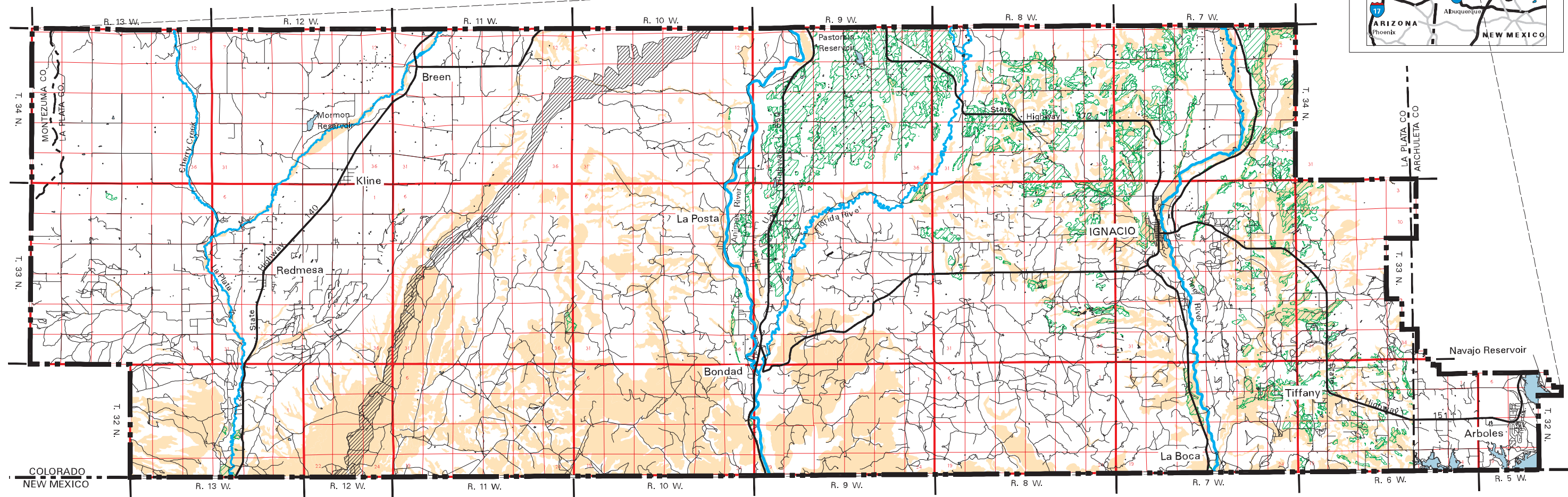
Oil and Gas Development on the Southern Ute Indian Reservation EIS

SOILS



SOURCE: Southern Ute Indian Tribe Natural Resources Division, Dames & Moore 10/14/96, Natural Resources Conservation Service, 1988

LOCATION MAP



General Reference Features:

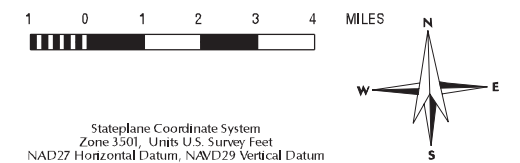
- Township/Range Lines
- Section Lines
- Road
- Highway
- Study Boundary
- State Line
- County Line
- River
- Lake / Reservoir
- Fruitland Outcrop

Resource Legend:

- High to Severe Erosion Potential
- Prime Farmland with Irrigation

NOTE: Prime farmland areas were determined from a combination of soil surveys, reclassified Thematic Mapper imagery (irrigated agricultural areas), and slopes of less than 6% derived from 7.5' USGS Digital Elevation Models.

SCALE 1 : 214200



Stateplane Coordinate System
Zone 3501, Units U.S. Survey Feet
NAD27 Horizontal Datum, NAD29 Vertical Datum

September 10, 1999

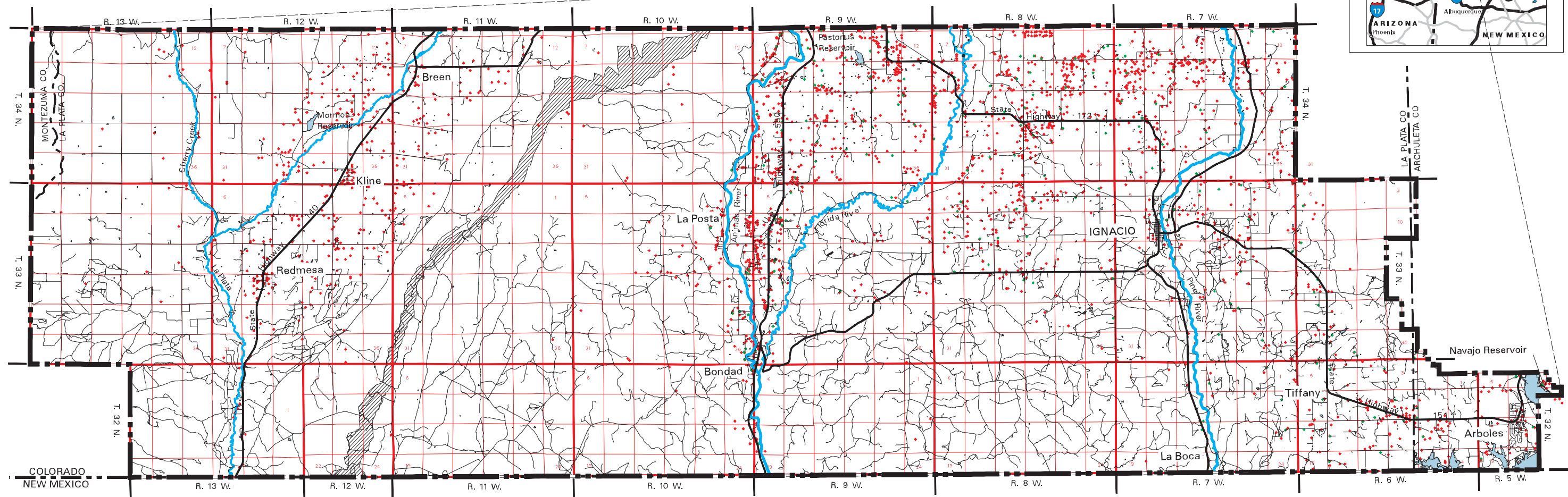
Oil and Gas Development on the Southern Ute Indian Reservation EIS

SOIL EROSION AND PRIME FARMLAND



SOURCE: Southern Ute Indian Tribe Natural Resources Division, Dames & Moore, Natural Resources Conservation Service

LOCATION MAP



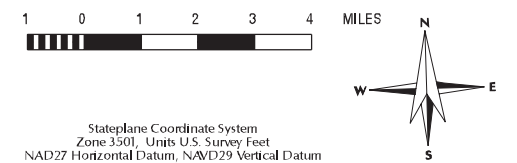
General Reference Features:

- Township/Range Lines
- Section Lines
- Road
- Highway
- Study Boundary
- State Line
- County Line
- River
- Lake / Reservoir
- Fruitland Outcrop

Resource Legend:

- Water wells recorded with the Colorado State Engineer's Office, database provided by the BLM-SJRA
- Wells sampled as part of the COGCC and BLM (1995) Water Well Study of Methane Contamination

SCALE 1 : 214200



September 13, 1999

Oil and Gas Development on the Southern Ute Indian Reservation EIS

WATER WELLS



SOURCE: Well information: Dwights Energy Data, BLM 09/23/96.