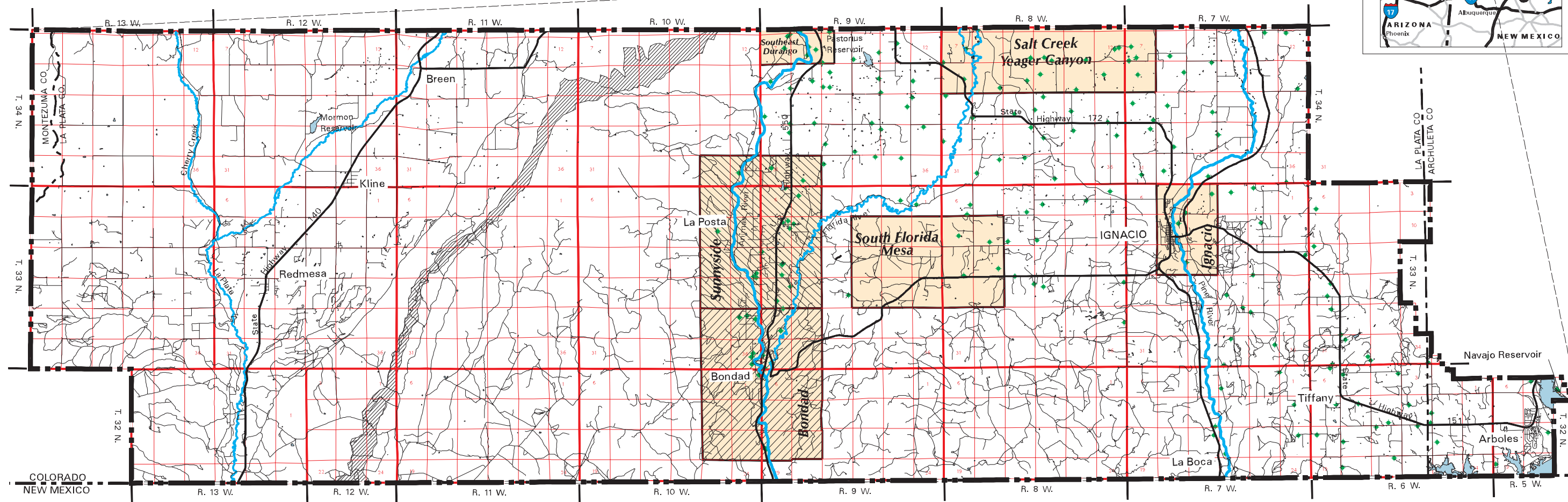


LOCATION MAP



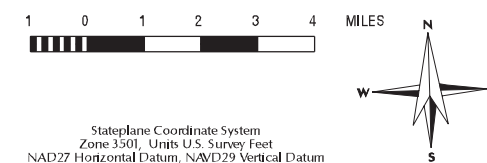
General Reference Features:

- Township/Range Lines
- Section Lines
- Road
- Highway
- Study Boundary
- State Line
- County Line
- River
- Lake / Reservoir
- Fruitland Outcrop

Resource Legend:

- Area of concern identified in COGCC and BLM 1995
- Wells sampled as part of the COGCC and BLM (1995) Water Well Study of Methane Contamination

SCALE 1 : 214200



Stateplane Coordinate System
Zone 3501, Units U.S. Survey Feet
NAD27 Horizontal Datum, NAD29 Vertical Datum

September 13, 1999

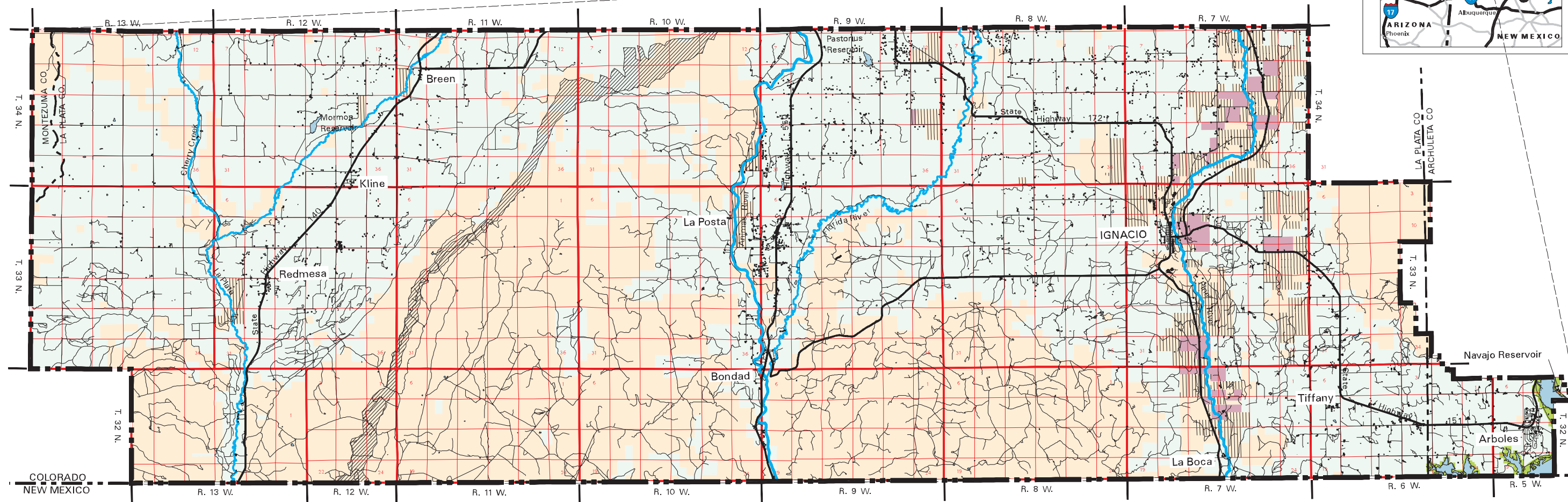
Oil and Gas Development on the Southern Ute Indian Reservation EIS

SAMPLED WATER WELLS AND METHANE CONTAMINATION AREAS OF CONCERN



SOURCE: Well information: Dwights Energy Data, BLM 09/23/96.

LOCATION MAP



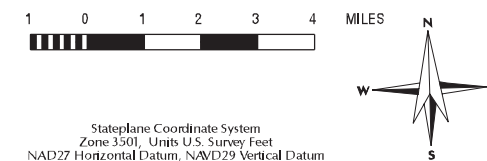
General Reference Features:

- Township/Range Lines
- Section Lines
- Road
- Highway
- Study Boundary
- State Line
- County Line
- River
- Lake / Reservoir
- Fruitland Outcrop
- Residence

Resource Legend:

- Tribal Trust Lands
 - Allotted Lands
 - Private Lands
 - State of Colorado
 - Assigned Lands
- Note: The land beneath and immediately surrounding Navajo Reservoir is owned by the federal government.

SCALE 1 : 214200



Stateplane Coordinate System
Zone 3501, Units U.S. Survey Feet
NAD27 Horizontal Datum, NAD29 Vertical Datum

September 13, 1999

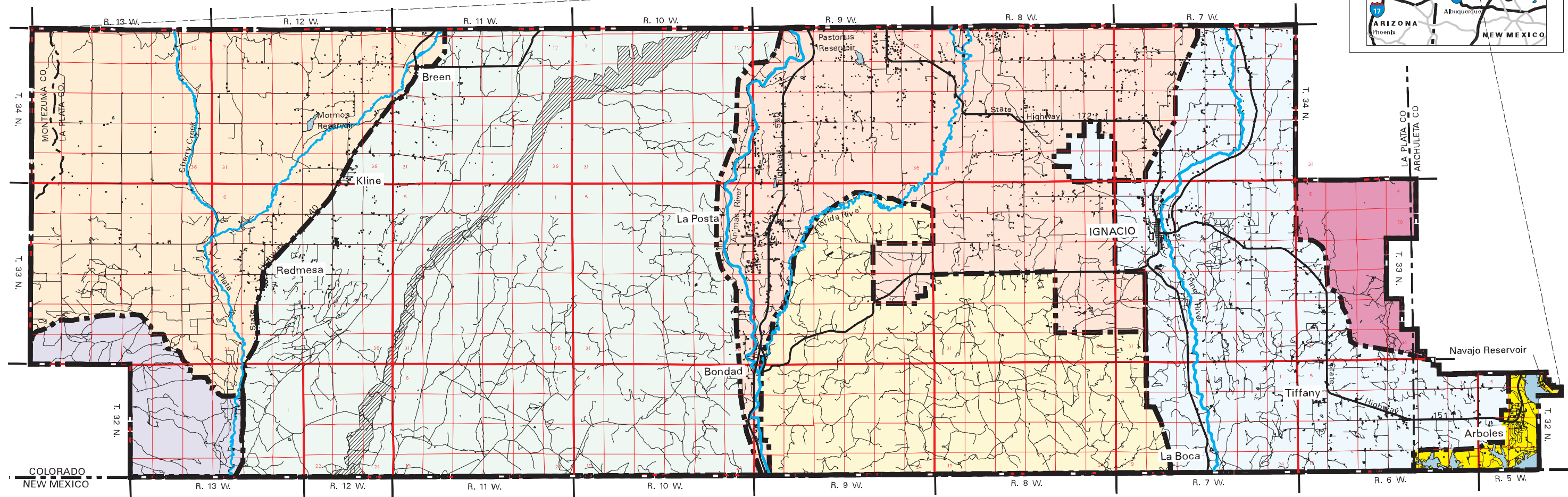
Oil and Gas Development on the Southern Ute Indian Reservation EIS

SURFACE LAND OWNERSHIP



SOURCE: Bureau of Indian Affairs modified with Southern Ute Indian Tribe Natural Resources Division Data

LOCATION MAP



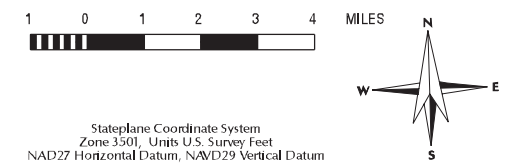
General Reference Features:

- Township/Range Lines
- Section Lines
- Road
- Highway
- Study Boundary
- State Line
- County Line
- River
- Lake / Reservoir
- Fruitland Outcrop
- Residence

Resource Legend:

- Animas-La Plata Management Unit #1 - Management priorities for this area include identifying and developing irrigable farm lands and developing a land consolidation plan.
- Morgan Canyon Management Unit #2 - Management priorities for this area include consolidating land and timber harvesting on approximately 50 acres.
- Picnic Flats Management Unit #3 - Management priorities for this area include identifying and setting aside areas for future residential communities, as well as development of a road plan to service multiple uses within this unit including residential, oil & gas, and forestry.
- Florida Mesa Management Unit #4 - Management priorities for this area include the establishment of residential communities sites & protecting them from conflicting uses such as Tribal satellite communities and/or long term housing leases. Management priorities for this unit also include developing recreation and fishery potential along the Animas River.
- Mesa Mountains Management Unit #5 - Management priorities for this area include creating new animal waters preferably within 1.5 miles of all major forage areas, identifying unnecessary roads, and limiting of gas development disturbances.
- Pine River Management Unit #6 - Management priorities for this area include prompting & protecting the growth of cottonwood trees or seedlings, improving access for fishermen, and developing a land consolidation plan.
- Sambritos Management Unit #7 - Management priorities for this area include developing a road plan to limit access to future areas of timber and oil and gas, establishing designated cutting blocks in woodland areas, and pursuing reacquisition or stewardship of USFS lands north of Sambritos.
- Piedra Management Unit #8 - Management priorities for this area include creating a plan to develop lands adjacent to Navajo Reservoir.

SCALE 1 : 214200



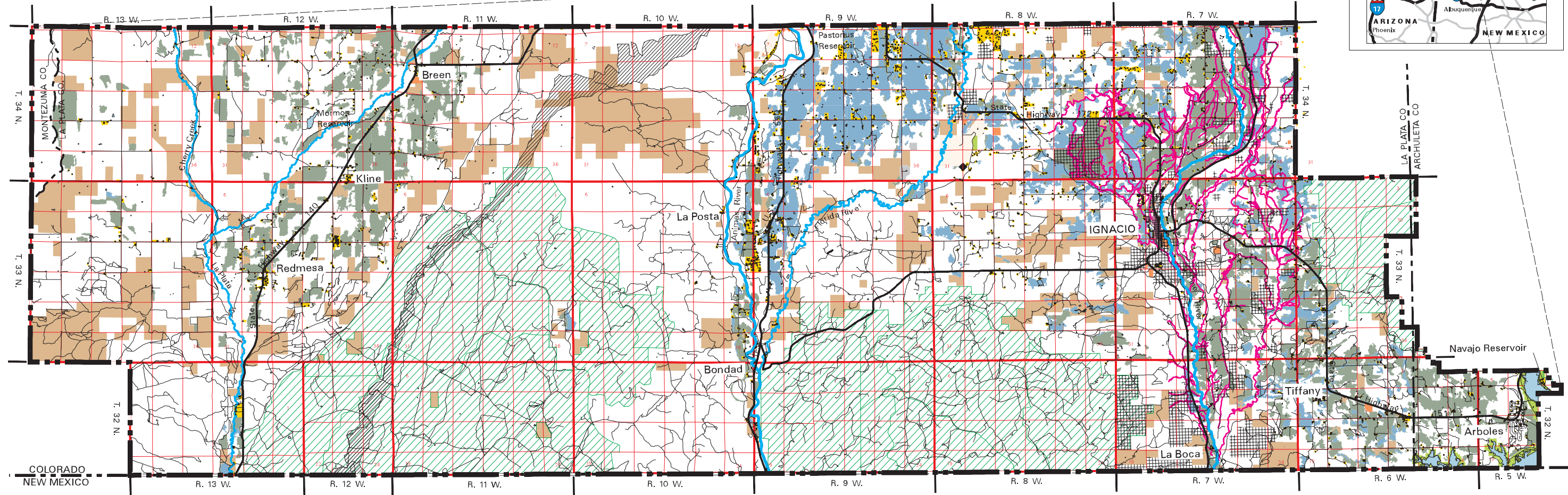
September 13, 1999

Oil and Gas Development on the Southern Ute Indian Reservation EIS
SUIT RESERVATION MANAGEMENT PLANNING UNITS



SOURCE: Southern Ute Indian Tribe Natural Resources Division, 1996

LOCATION MAP



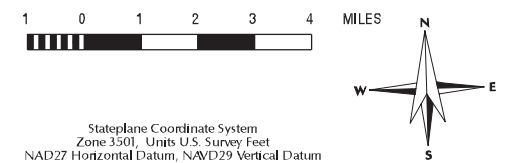
General Reference Features:

- Township/Range Lines
- Section Lines
- Road
- Highway
- Study Boundary
- State Line
- County Line
- River
- Lake / Reservoir
- Fruitland Outcrop
- Residence

Resource Legend:

- Residential
- Commercial
- Recreation
- Industrial
- Public/Quasi-Public
- Agriculture
- Prime Farmland
- Grazing
- SUIT Designated Grazing Units
- Suitable and Available Lands
- Towns
- Tribal or Fee Multiuse Lands
- Pine River Indian Irrigation Project (PRIIP)
- County Airport

SCALE 1 : 214200



Stateplane Coordinate System
Zone 3501, Units U.S. Survey Feet
NAD27 Horizontal Datum, NAD29 Vertical Datum

September 13, 1999

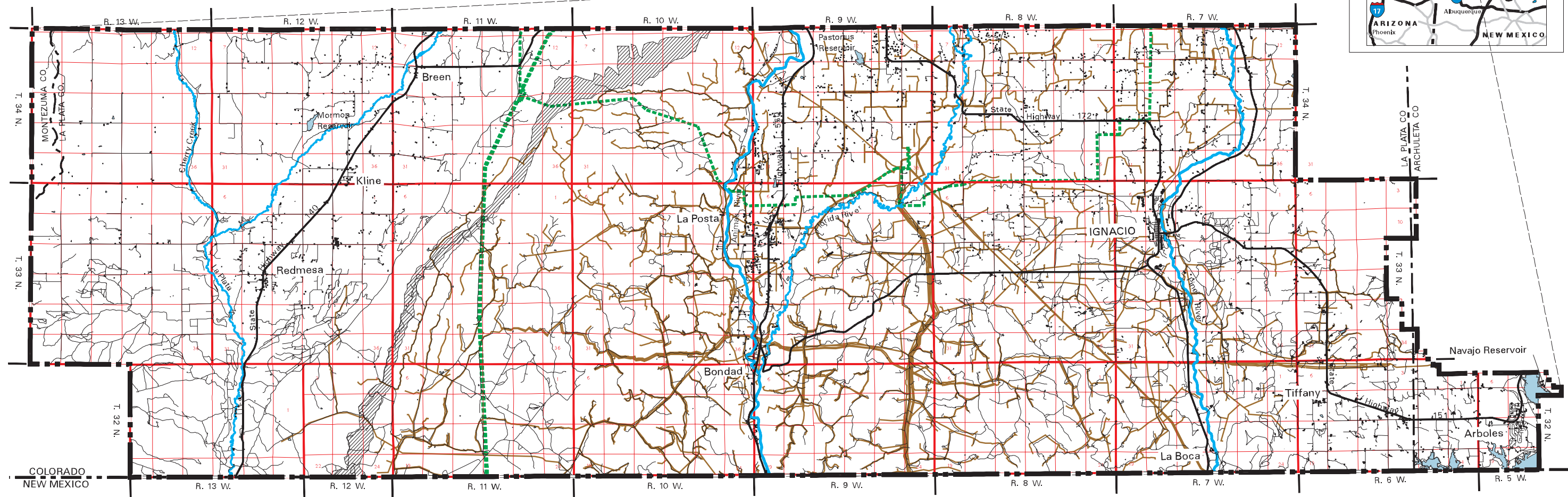
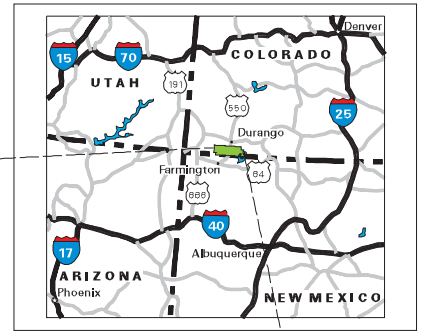
Oil and Gas Development on the Southern Ute Indian Reservation EIS

EXISTING LAND USE



SOURCE: Bureau of Indian Affairs, La Plata County Planning Department, Southern Ute Indian Tribe Natural Resources Division

LOCATION MAP



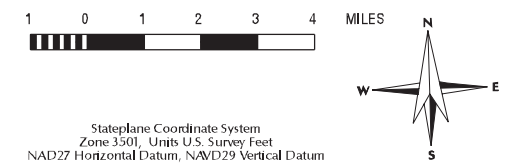
General Reference Features:

- Township/Range Lines
- Section Lines
- Road
- Highway
- Study Boundary
- State Line
- County Line
- River
- Lake / Reservoir
- Fruitland Outcrop
- Residence

Resource Legend:

- Transmission Lines (69kV and higher)
- Pipelines

SCALE 1 : 214200



Stateplane Coordinate System
Zone 3501, Units U.S. Survey Feet
NAD27 Horizontal Datum, NAD29 Vertical Datum

September 13, 1999

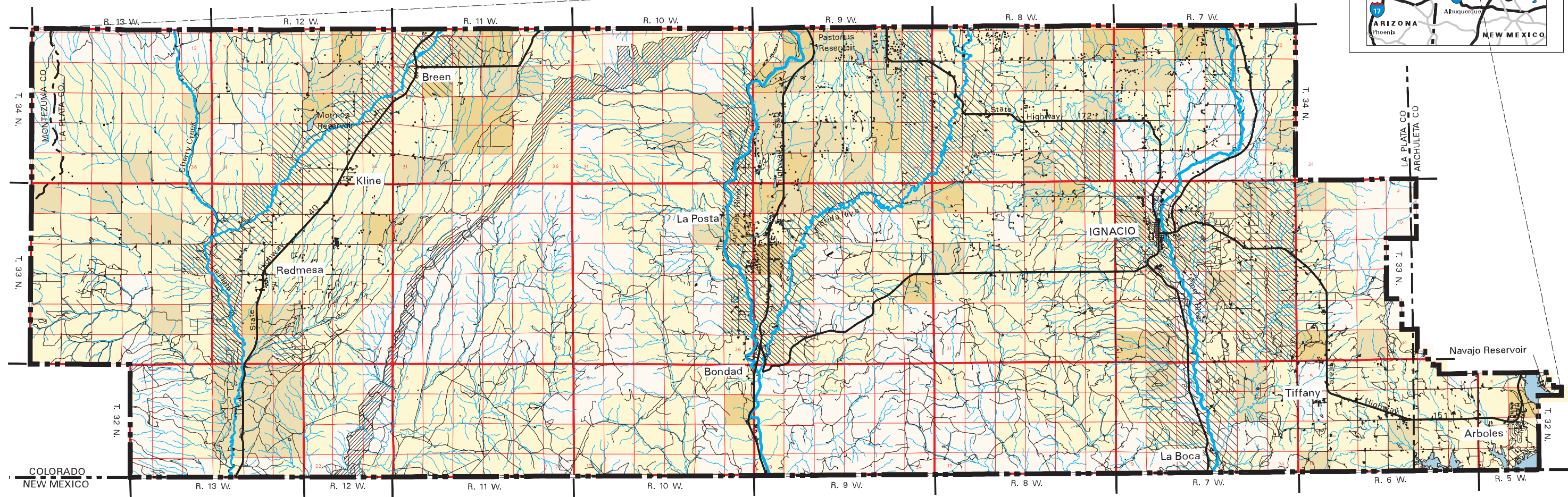
Oil and Gas Development on the Southern Ute Indian Reservation EIS

TRANSPORTATION AND UTILITIES



SOURCE: Pipelines: Amoco, Southern Ute Indian Tribe Energy Division; Transmission Lines: Laplata Electric Association, Tristate Generation & Transmission Association Inc.

LOCATION MAP



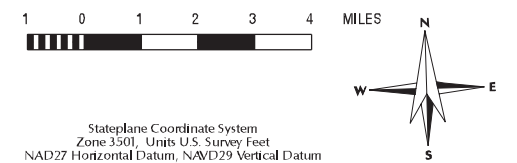
General Reference Features:

- Township/Range Lines
- Section Lines
- Road
- Highway
- Study Boundary
- State Line
- County Line
- Stream
- River
- Lake / Reservoir
- Fruitland Outcrop
- Residence

Resource Legend:

- INDIAN HISTORIC HOMESTEAD ACTIVITY
- Low - (0 to 2 entries per section)
 - Moderate - (3 to 9 entries per section)
 - High - (10 to 12 entries per section)
 - Very High - (13 to 20 entries per section)
 - 1-2 Indian Allotments per Section
 - 3-4 Indian Allotments per Section

SCALE 1 : 214200



Stateplane Coordinate System
Zone 3501, Units U.S. Survey Feet
NAD27 Horizontal Datum, NAD29 Vertical Datum

September 13, 1999

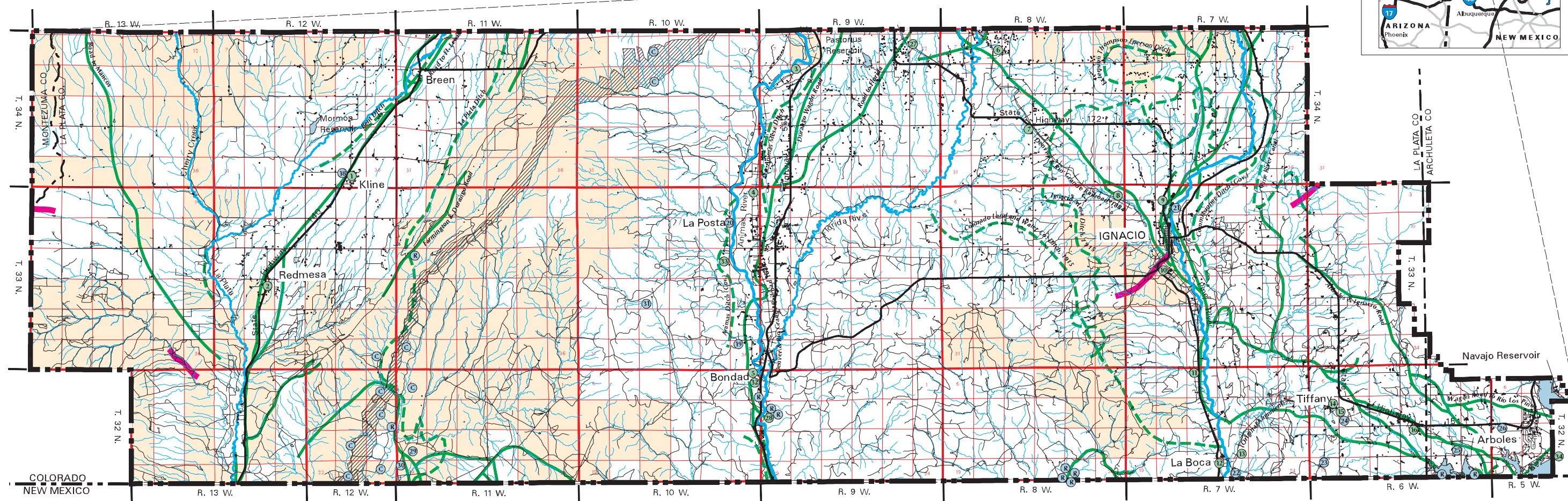
Oil and Gas Development on the Southern Ute Indian Reservation EIS

HISTORIC HOMESTEAD AND INDIAN ALLOTMENT ACTIVITY



SOURCE: General Land Office Records on file at CO State Office, BLM

LOCATION MAP



General Reference Features:

- Township/Range Lines (1922-1928)
- Section Lines
- Road
- Highway
- Study Boundary
- State Line
- County Line
- Stream
- River
- Lake / Reservoir
- Fruitland Outcrop
- Residence

Resource Legend:

- Oil-Gas Exploration/Development (1922-1928)
- Railroad
- Roads Prior to 1896
- Ditches Prior to 1915
- Indian Trails Prior to 1896

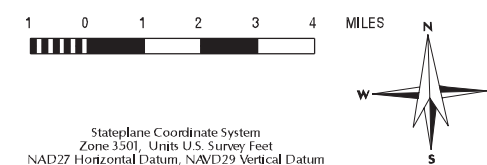
Named Communities:

- 1** Kline, 1915
- 2** Redmesa, 1915
- 3** Lodo, 1915
- 4** Posta, 1915
- 5** Bondad, 1915
- 6** Colina, 1893 (Sloan, 1915)
- 7** Oxford, 1915
- 8** Ignacio City, 1915
- 9** Los Pinos Agency, 1893
- 10** Ignacio, 1893 (Ignacio Station, 1915)
- 11** Laboca, 1893
- 12** Laboca Station, 1915
- 13** Serano, 1893
- 14** Tiffany, 1915
- 15** Ballejo, 1893
- 16** Allison, 1915
- 17** Arboles, 1893 & 1915
- 27** Florida, 1915
- 28** Colmex, 1915
- 32** Elco, 1915
- 33** Casteloir, 1915
- 34** La Prieda

Other Named Features:

- 18** Kline Cemetery
- 19** Elco Cemetery
- 20** La Posta Cemetery
- 21** Ouray Memorial Cemetery
- 22** Unnamed Cemetery
- 23** Tiffany Cemetery
- 24** Allison-Tiffany Cemetery
- 25** Unnamed Cemetery
- 26** "Graves"
- 29** Hubbard Reservoir (proposed), 1915
- 30** Colmex Reservoir (proposed), 1915
- 31** Brown Sawmill, 1915
- C** Noted Coal Deposits prior to 1896
- R** Ranches or other agricultural structures prior to 1896

SCALE 1 : 214200



Stateplane Coordinate System
Zone 3501, Units U.S. Survey Feet
NAD27 Horizontal Datum, NAD29 Vertical Datum

September 13, 1999

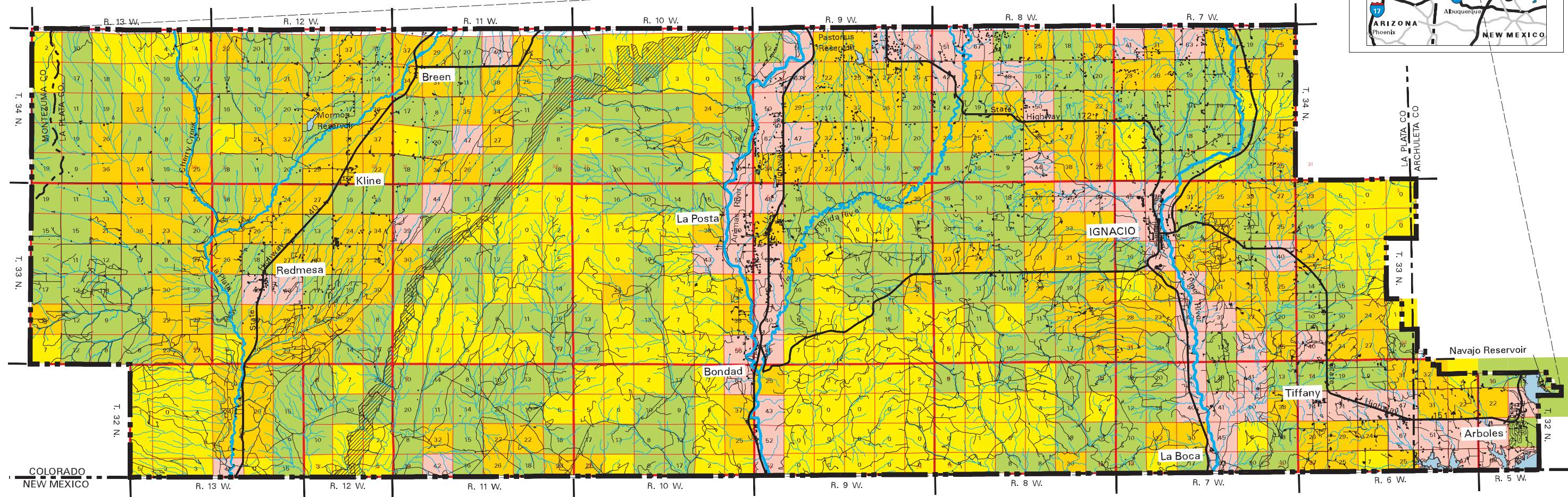
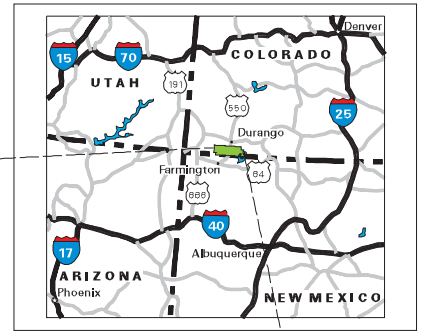
Oil and Gas Development on the Southern Ute Indian Reservation EIS

HISTORIC RESOURCES INVENTORY



SOURCE: General Land Office Records on file at CO State Office, BLM

LOCATION MAP



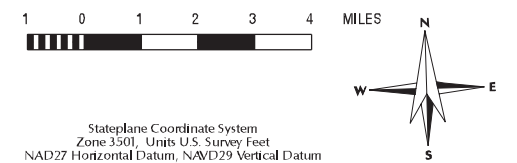
General Reference Features:

- Township/Range Lines
- Section Lines
- Road
- Highway
- Study Boundary
- State Line
- County Line
- Stream
- River
- Lake / Reservoir
- Fruitland Outcrop
- Residence

Resource Legend:

- NON-INDIAN HISTORIC HOMESTEAD SENSITIVITY
- Extremely Low - (0-7 entries per section)
 - Low - (8-20 entries per section)
 - Moderate - (21-38 entries per section)
 - High - (39 to 80 entries per section)

SCALE 1 : 214200



Stateplane Coordinate System
Zone 3501, Units U.S. Survey Feet
NAD27 Horizontal Datum, NAD29 Vertical Datum

September 14, 1999

Oil and Gas Development on the Southern Ute Indian Reservation EIS

NON-INDIAN HOMESTEADING CULTURAL SENSITIVITY



SOURCE: Colorado Historical Society Site Database 09/26/96