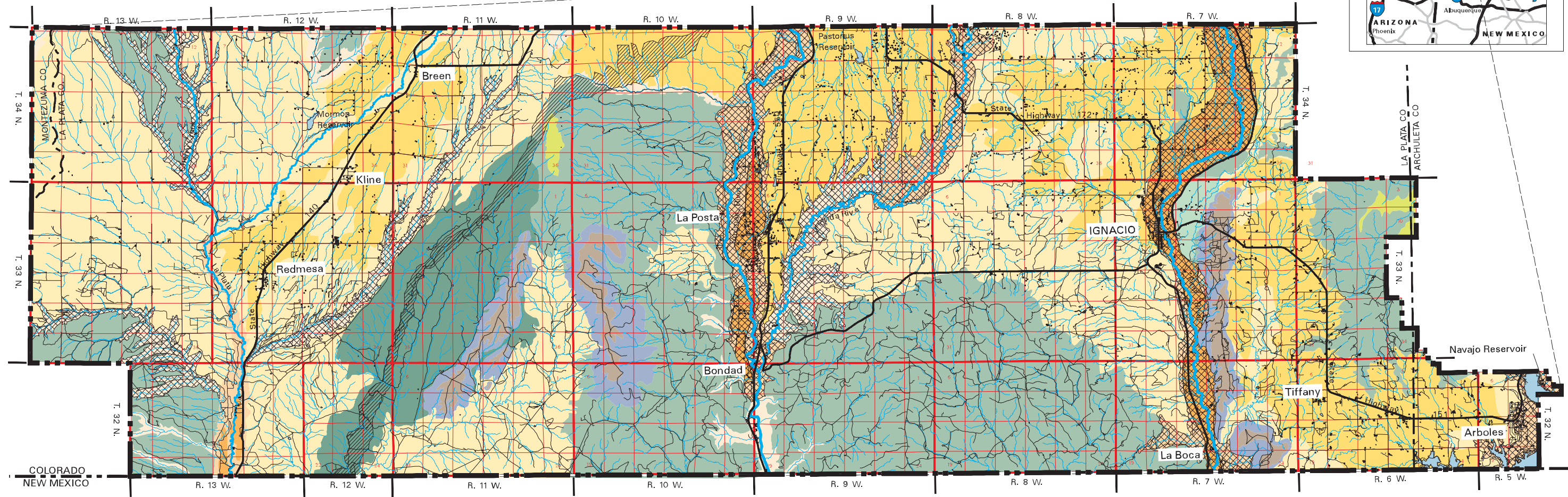
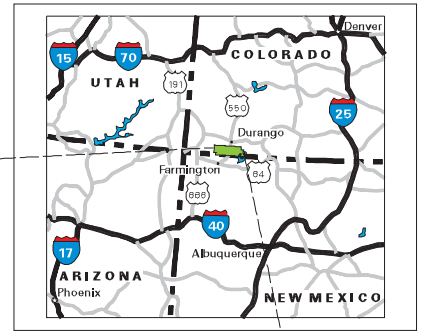


LOCATION MAP



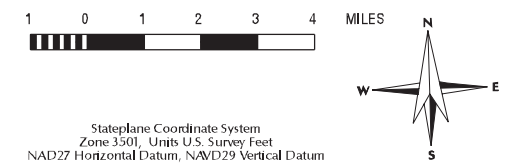
General Reference Features:

- Township/Range Lines
- Section Lines
- Road
- Highway
- Study Boundary
- State Line
- County Line
- Stream
- River
- Lake / Reservoir
- Fruitland Outcrop
- Residence

Resource Legend:

- | | |
|-----------------------------|----------------------------|
| Canyon | Mesa Top |
| River Valley | Ridges and Narrow Valleys |
| River Valley/Agricultural | Mountain |
| Rolling Upland | Reservoir |
| Rolling Upland/Agricultural | High Scenic Attractiveness |
| Upland Hills | |
| Upland Hills/Agricultural | |
| Mesa Rim | |

SCALE 1 : 214200



Stateplane Coordinate System
Zone 3501, Units U.S. Survey Feet
NAD27 Horizontal Datum, NAD29 Vertical Datum

September 07, 1999

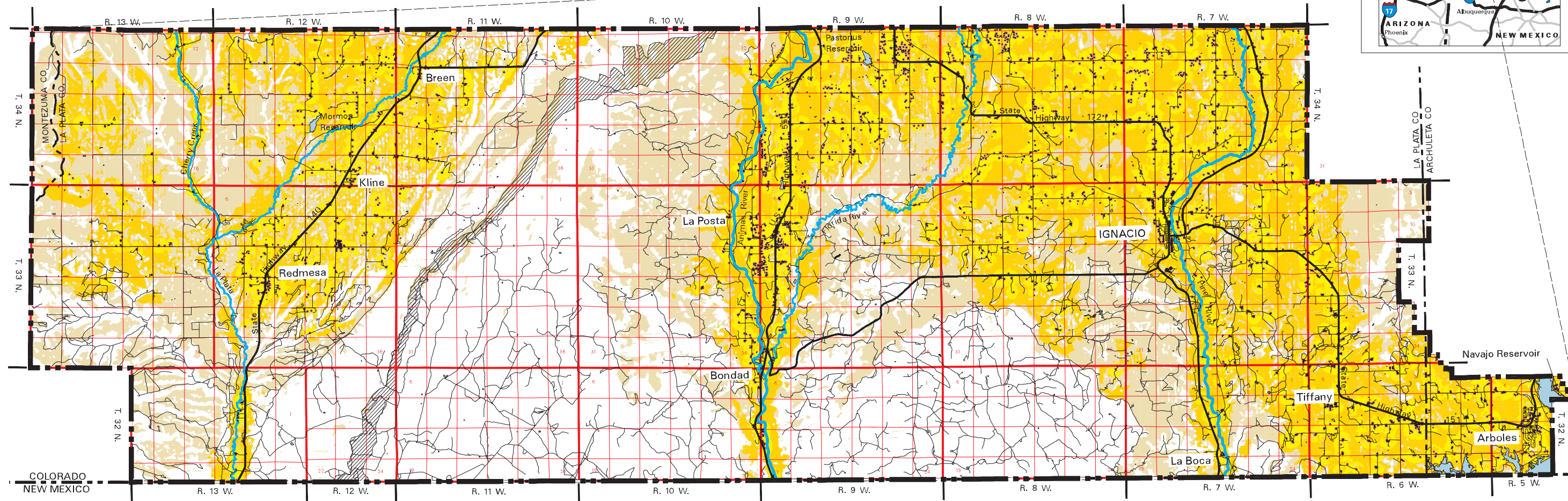
Oil and Gas Development on the Southern Ute Indian Reservation EIS

LANDSCAPE CHARACTER



SOURCE: Dames & Moore, 1996

LOCATION MAP



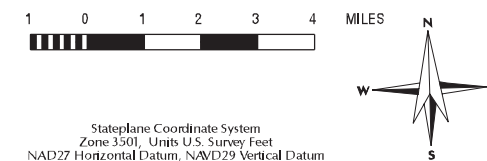
General Reference Features:

- Township/Range Lines
- Section Lines
- Road
- Highway
- Study Boundary
- State Line
- County Line
- River
- Lake / Reservoir
- Fruitland Outcrop
- Residence

Resource Legend:

- VISIBILITY RANGES
- Immediate foreground views (0'-300')
 - Foreground views (300'-1/4 mile)
 - Middleground views (1/4 mile - 1 mile)
 - Background views (1 mile - 5 miles)
 - Seldom seen views or > 5 miles

SCALE 1 : 214200



Stateplane Coordinate System
Zone 3501, Units U.S. Survey Feet
NAD27 Horizontal Datum, NAD29 Vertical Datum

September 08, 1999

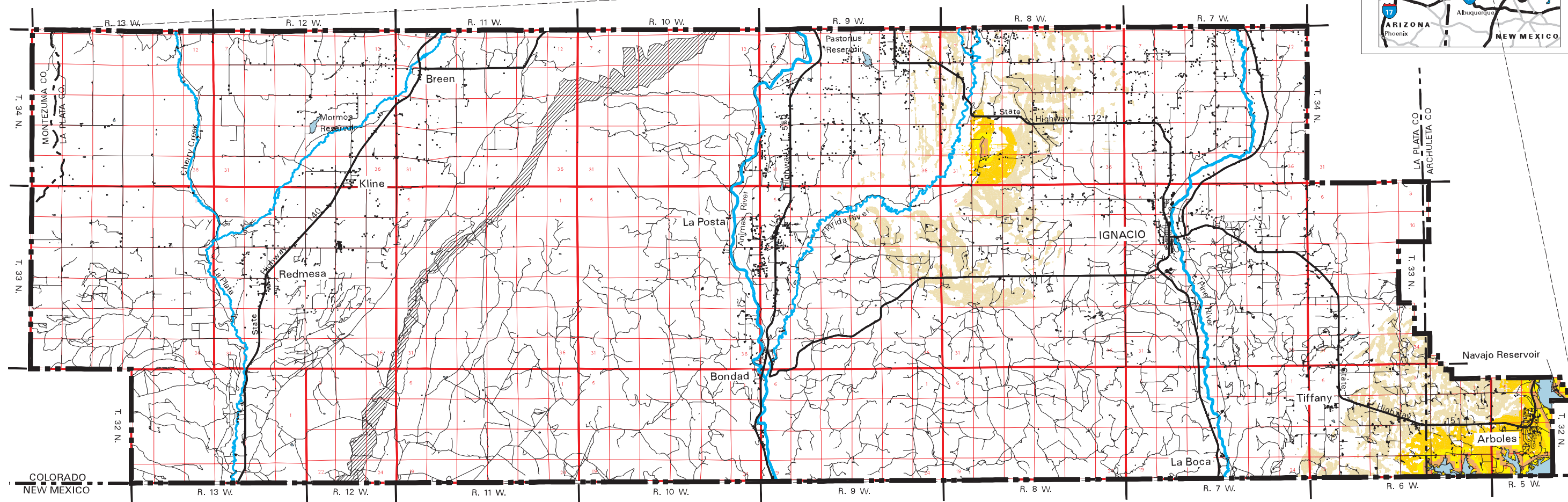
Oil and Gas Development on the Southern Ute Indian Reservation EIS

VISIBILITY FROM RESIDENCES



SOURCE: United States Geological Survey 30 Meter Digital Elevation Model
Dames & Moore, 1996

LOCATION MAP



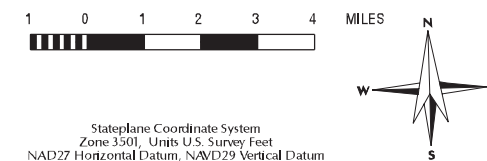
General Reference Features:

- Township/Range Lines
- Section Lines
- Road
- Highway
- Study Boundary
- State Line
- County Line
- River
- Lake / Reservoir
- Fruitland Outcrop
- Residence

Resource Legend:

- VISIBILITY RANGES
- Immediate foreground views (0'-300')
 - Foreground views (300'-1/4 mile)
 - Middleground views (1/4 mile - 1 mile)
 - Background views (1 mile - 5 miles)
 - Seldom seen views or > 5 miles

SCALE 1 : 214200



Stateplane Coordinate System
Zone 3501, Units U.S. Survey Feet
NAD27 Horizontal Datum, NAD29 Vertical Datum

September 08, 1999

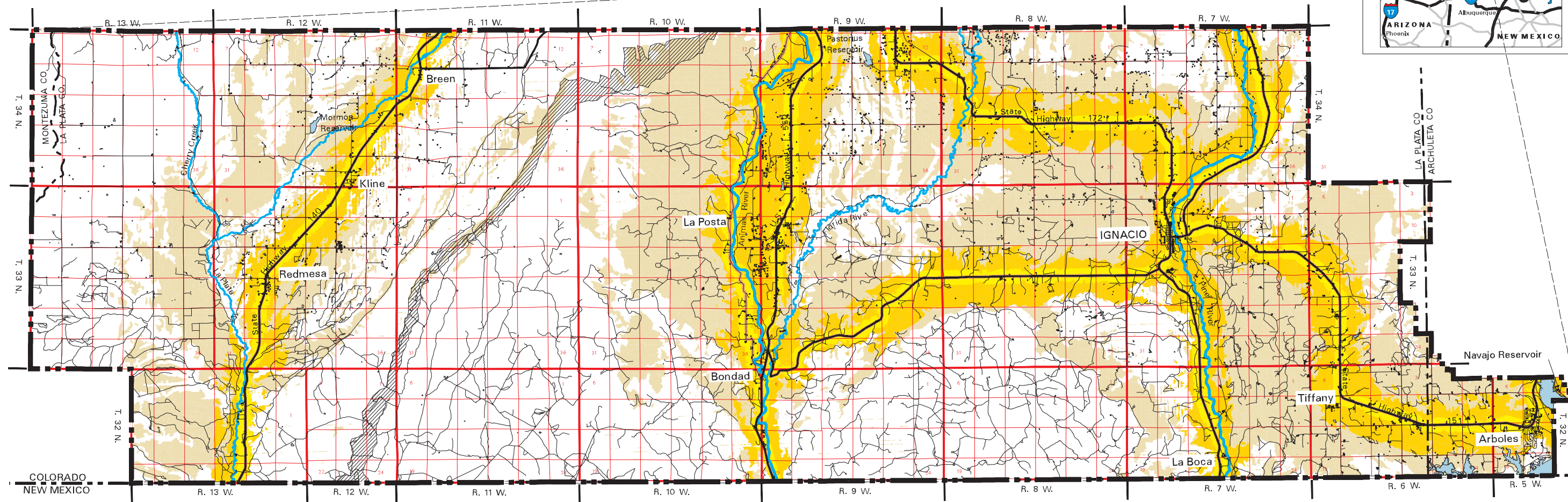
Oil and Gas Development on the Southern Ute Indian Reservation EIS

VISIBILITY FROM RECREATION



SOURCE: United States Geological Survey 30 Meter Digital Elevation Model
Dames & Moore, 1996

LOCATION MAP



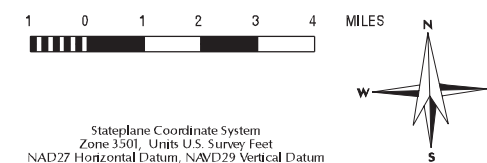
General Reference Features:

- Township/Range Lines
- Section Lines
- Road
- Highway
- Study Boundary
- State Line
- County Line
- River
- Lake / Reservoir
- Fruitland Outcrop
- Residence

Resource Legend:

- VISIBILITY RANGES
- Immediate foreground views (0'-300')
 - Foreground views (300'-1/4 mile)
 - Middleground views (1/4 mile - 1 mile)
 - Background views (1 mile - 5 miles)
 - Seldom seen views or > 5 miles

SCALE 1 : 214200



Stateplane Coordinate System
Zone 3501, Units U.S. Survey Feet
NAD27 Horizontal Datum, NAD29 Vertical Datum

September 08, 1999

Oil and Gas Development on the Southern Ute Indian Reservation EIS

VISIBILITY FROM KEY TRAVEL ROUTES



SOURCE: United States Geological Survey 30 Meter Digital Elevation Model
Dames & Moore, 1996