

Southern Ute Indian Reservation
Oil and Gas Road Designations for Reclamation

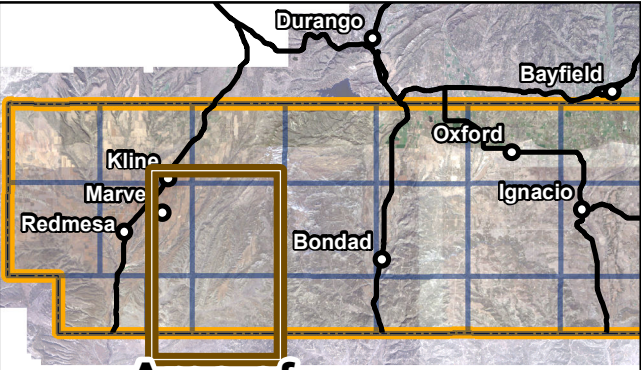
Tier 1 – Recommend to remain open. Heavy year-round usage. Main thoroughfares that can include major canyon, access, and/or County Roads. Heavy seasonal usage by Tribal Members for hunting.

Tier 2 – Recommend site specific reclamation. Medium year-round usage. Secondary thoroughfares or longer well spur roads. Medium to light seasonal usage for hunting by Tribal Members.

Tier 3 – Recommend to close and reclaim. Light year-round usage. Dead end roads and short well spur roads. Limited traffic and little to no use by Tribal Member hunters.

Special Use – Roads associated with the Southern Ute Department of Energy (SUDOE) Picket Fence Mitigation Vent Well Project and/or Coal fires. The SUDOE will continue to use these roads to monitor ongoing project areas.

Sources: Esri, Garmin, USGS, NPS



Area of Interest

Southern Ute Department of Energy Road Classification for Westside Plugged and Abandoned Well Reclamation

- LEGEND**
- Limited/Restricted Access
 - Chevron Proposed P&A wells
 - Road Classification**
 - Special Use - Remain Active
 - Tier 1 - Remain Active
 - Tier 2 - Site Specific Reclaim
 - Tier 3 - Reclaim
 - Range Resource Roads
 - Reservation Boundary
 - Townships
 - Sections



0 0.25 0.5 1 Miles

Created By: GF
06/24/2019
NAD 1983 StatePlane Colorado South FIPS 0503 Feet